



# 2022 Community Health Needs Assessment

Bon Secours Hampton Roads

# 2022 Community Health Needs Assessment

Adopted by the Bon Secours Hampton Roads Board of Trustees,  
September 27, 2022

As a ministry of which Bon Secours Hampton Roads is a member, Bon Secours Mercy Health has been committed to the communities it serves for nearly two centuries. This long standing commitment has evolved intentionally, based on our communities' most pressing health needs.

Every three years we evaluate those needs through a comprehensive Community Health Needs Assessment (CHNA) process. The most recent assessments, completed by Bon Secours Hampton Roads and community partners, include quantitative and qualitative data that guide both our community investment, community benefit, and strategic planning. The following document is a detailed CHNA for Bon Secours Hampton Roads.

Bon Secours Hampton Roads is dedicated to our Mission of extending the compassionate ministry of Jesus by improving the health and well-being of our communities and by bringing good help to those in need, especially people who are poor, dying, and underserved.

Bon Secours Hampton Roads has identified the greatest needs in our community by listening to the voices of the community. This ensures our resources for outreach, prevention, education, and wellness are directed towards opportunities where the greatest impact can be realized.

Written comments regarding the health needs that have been identified in the current CHNA should be directed to [phyllita\\_bolden@bshsi.org](mailto:phyllita_bolden@bshsi.org)

## **Bon Secours – Hampton Roads**

7025 Harbour View Blvd,  
Suite 118

Suffolk, VA 23435

757-215-2734  
[Bonsecours.com](http://Bonsecours.com)



# Table of Contents

|  |    |
|--|----|
| Executive Summary .....  | 4  |
| Mission And Values .....   | 8  |
| Process And Methods .....  | 12 |
| Significant Communtiy Identified Needs .....   | 21 |
| Prioritization Of Health Needs .....   | 30 |
| Resources Available To Meet Prioritized Needs .....  | 31 |
| Progress On Health Priorities Identified On The 2019-2021 Community<br>Health Needs Assessment ..... | 33 |
| Appendix .....   | 35 |
| Board Approval .....   | 77 |



# Executive Summary

## Overview

Hampton Roads is the southeastern region of Virginia. Hampton Roads has a population of 1.7M and covers an area of 3,730 square miles. Bon Secours Hampton Roads operates three hospitals in the area, including Maryview Medical Center, Mary Immaculate Hospital, and Southampton Medical Center, several medical group practices, and additional acute care facilities.

Bon Secours collaborated with the following organizations to conduct the CHNA:

- Children's Hospital of the King's Daughters
- Riverside Health System
- Sentara Healthcare
- Virginia Department of Health – Peninsula and Hampton Health Districts

Information was collected via a community survey, community focus groups, and through data sources, such as Metopio, GHRConnects.org, RWJF County Health Rankings, and Virginia Department of Health.

## Significant health needs

1. Diabetes
2. Heart Disease
3. Violence in the Community
4. Substance Use Disorders
5. Physical Inactivity
6. Cancer
7. Adult Obesity
8. Sexually Transmitted Infections
9. Workforce Development

## Prioritized Health Needs

1. Healthcare Access – Mental and Behavioral Health, including Substance Use Disorders
2. Healthcare Access – Chronic Conditions
3. Neighborhood and Built Environment – Violence in the Community
4. Economic Stability - Workforce Development



## Resources Available

Although Bon Secours Hampton Roads recognizes the importance of all the needs identified by the community, resources are limited within the organization to prioritize all of the needs. There are other providers and organizations addressing these needs with specialized programs and services. Bon Secours Hampton Roads is prepared to collaborate and assist with these efforts beyond the current set of services we provide.

The list below provides names of some resources in the area that can help meet the identified needs of the community:

## Chronic Health Conditions

- ACCESS Partnership
- American Diabetes Association
- American Heart Association
- Chesapeake Regional Medical Center
- Children's Hospital of the King's Daughters
- Diabetes Self-Management Program
- Foodbank of Southeast Virginia and the Eastern Shore
- Geriatrics Life Care
- Hampton Roads Community Health Centers
- Lackey Clinic
- Lake Taylor Hospital
- Riverside Health System
- Sentara Healthcare
- Tidewater Physicians Medical Group
- Veterans Affairs Medical Center
- Virginia Department of Health
- Virginia Peninsula FoodBank



## Substance Use Disorders

- ACCESS Partnership
- Affinity Healthcare Group Newport News LLC
- American Addiction Treatment Center
- Catholic Charities of Eastern Virginia
- Chesapeake Regional Medical Center
- Children's Hospital of the King's Daughters
- Drug Rehab – Hampton
- Drug Rehab – Newport News
- Hampton Newport News CSB Southeastern Family Project
- Hampton Roads Community Health Centers
- Hampton Roads Clinic Opioid Treatment Program
- Jewish Family Services
- Lackey Clinic
- Lake Taylor Hospital
- Norfolk Department of Public Health
- Newport News Behavioral Health Center
- Newport News Substance Abuse Treatment
- Peninsula Alcohol Safety Action Program
- Peninsula Community Opioid Response
- Riverside Health System
- Sentara Healthcare
- The Barry Robinson Center
- Veterans Affairs Medical Center
- Virginia Department of Health





## Neighborhood and Built Environment – Violence in the Community

- Civic Leagues
- Community Development Corporations
- Elizabeth River Project
- Law Enforcement
- Virginia Cooperative Extension

## Economic Stability – Workforce Development

- Hampton Roads Workforce Council
- New Horizons Technical School
- Local colleges and universities

For a list of additional resources available to meet identified needs of the community, please review the Virginia Department of Health's Community Services Resource Guide at <https://www.vdh.virginia.gov/Resources>.

## Feedback

We welcome your written comments, questions, or other feedback to help us focus on areas where we can improve access to health and social services.

Feedback can be submitted via a survey link for Bon Secours Hospitals at:

<https://www.bonsecours.com/about-us/community-commitment/community-health-needs-assessment>



# Our Mission

Our mission is to extend the compassionate ministry of Jesus by improving the health and well-being of our communities and bring good help to those in need, especially people who are poor, dying and underserved.

# Our Vision

Inspired by God's hope for the world, we will be a ministry where associates want to work, clinicians want to practice, people seek wellness and communities thrive.

# Our Values

## Human Dignity

We commit to upholding the sacredness of life and being respectful and inclusive of everyone.

## Integrity

We commit to acting ethically and modeling right relationships in all of our individual and organizational encounters.

## Compassion

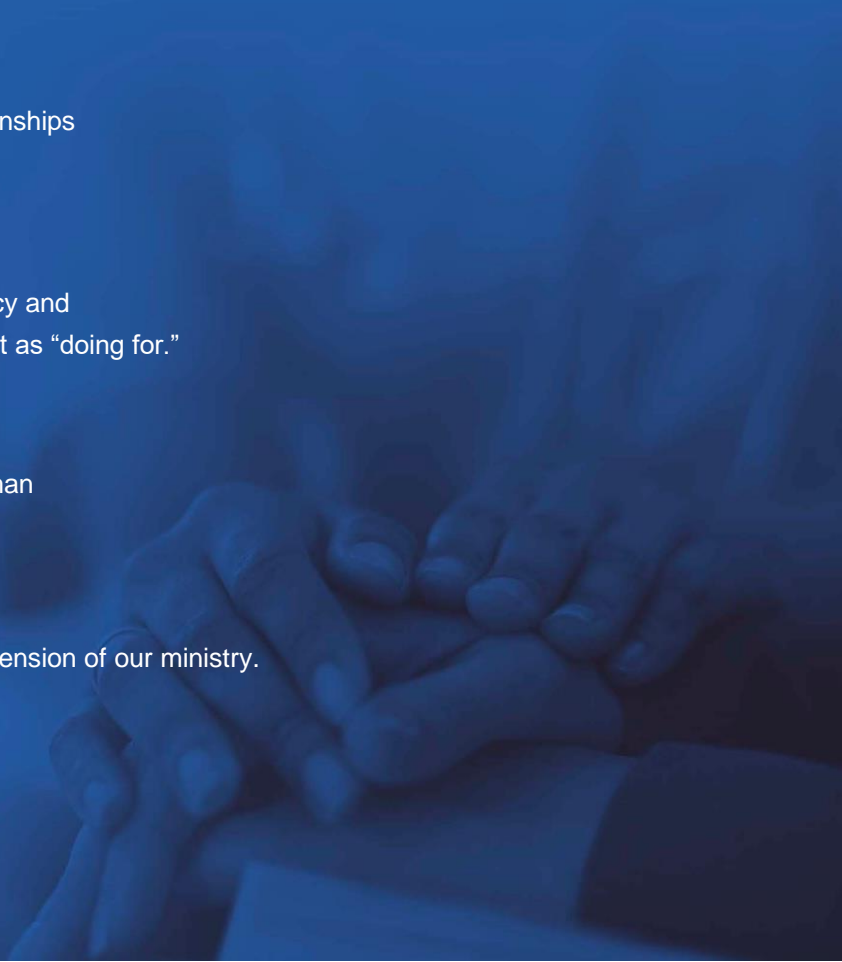
We commit to accompanying those we serve with mercy and tenderness, recognizing that “being with” is as important as “doing for.”

## Stewardship

We commit to promoting the responsible use of all human and financial resources, including Earth itself.

## Service

We commit to providing the highest quality in every dimension of our ministry.





## Facilities Description

### **Bon Secours Mary Immaculate Hospital**

Bon Secours Mary Immaculate Hospital (Mary Immaculate) has served the Hampton Roads region over 60 years. Mary Immaculate Hospital was originally founded as Elizabeth Buxton Hospital at the turn of the twentieth century and opened in the eastern part of Newport News, near what is now the Monitor-Merrimac Bridge Tunnel. In 1952, the Bernardine Franciscan Sisters, Order of St. Francis, assumed the sponsorship of the hospital and renamed it Mary Immaculate Hospital. Recognizing the demographic trends occurring on the Peninsula, the Sisters made plans to relocate the hospital to an area where limited healthcare services were available and in the early 1980s, the hospital was relocated to its current campus in Newport News. In 1996, through a joint venture arrangement, Mary Immaculate Hospital became a 'member' of the Bon Secours Health System and was renamed Bon Secours Mary Immaculate Hospital.

Mary Immaculate is now a 123-bed not-for-profit, acute care facility licensed in the state of Virginia and serving approximately 465,000 residents mostly originating from the cities of Newport News, Hampton, York County, and Williamsburg. Mary Immaculate provides a comprehensive array of inpatient and outpatient services.

### **Bon Secours Maryview Medical Center**

Bon Secours Maryview Medical Center has served the western Hampton Roads region since 1945. Maryview Medical Center was founded when the federal government recognized a need in Portsmouth for a facility which would serve the healthcare needs of shipyard workers. With a small staff, the 150-bed, 30-bassinet Glenshellah Hospital opened its doors to serve residents of the community on March 4, 1945. When the war ended in 1945, the hospital dedicated its mission to caring for polio victims. At the request of the Diocese of Richmond, the Daughters of Wisdom answered the call and came to Portsmouth from Canada to operate the facility. It was renamed Maryview Medical Center in honor of the Virgin Mary and the Waterview area of Portsmouth where the hospital is located. In 1984, Bon Secours Health System agreed to sponsor Maryview Medical Center and continue operating the acute care facility in the Catholic tradition established by the Daughters of Wisdom.



Bon Secours Maryview Medical Center (Maryview) is a 346-bed not-for-profit, acute care facility licensed in the state of Virginia and serving approximately 432,200 residents primarily in Chesapeake, Norfolk, Portsmouth, Suffolk, and the counties of Isle of Wight and Southampton. Maryview provides a comprehensive array of inpatient and outpatient services.

### **Bon Secours Southampton Medical Center**

Bon Secours Southampton Memorial Center (Southampton), Franklin/Southampton's first medical facility began in the home of Dr. Raiford in the small community of Sedley and later became Raiford Hospital. Southampton Medical Center opened in 1963 on its current site and joined Bon Secours Mercy Health, Inc on January 1, 2020.

Southampton is a 219-bed not-for-profit, acute care facility licensed in the state of Virginia and serving approximately 63,477 residents primarily in cities of Franklin and Suffolk and the counties of Isle of Wight and Southampton. Southampton has 90 licensed general acute care beds, eight ICU beds, 58 medical/surgical beds (including 10 licensed Swing beds), a 13-bed secured medical unit, and 10 medical detox beds. In addition, Southampton operates a 24-hour emergency services department and a 129-bed long term care facility.

## **Community Served by the Hospital**

Hampton Roads is the southeastern region of Virginia, which is comprised of the municipalities of Chesapeake, Franklin, Gloucester County, Hampton, Isle of Wight, James City County, Mathews County, Newport News, Norfolk, Portsmouth, Poquoson, Southampton County, Suffolk, Virginia Beach, Williamsburg, and York County. This area is officially recognized as the Virginia Beach-Norfolk-Newport News Metropolitan Statistical Area. The population of Hampton Roads is 1.7M and covers an area of over 3,730 square miles. Hampton Roads contains urban, suburban, and rural communities and has a rich history tied to its colonial roots. 21% of the population is below 18 years of age, 61% of population is between 18 and 64 years of age, and 18% of the population is 65 years of age or older. 60.6% of the population identifies as White, 28% of the population identifies as Black, and 5.4% identify as Hispanic. The region's median household income is approximately \$69,475 compared to the state's median of \$76,500. Hampton Roads is strongly influenced by the waterways in the region, including the Atlantic Ocean, Chesapeake Bay, the Great Dismal Swamp, James River, Nansemond River, and Elizabeth River.

Hampton Roads has a strong affinity to the United States military and is home to approximately 83,000 active-duty military personnel, the largest Naval base in the world, and the only NATO command on U.S. soil which result in 45.6% of regional economic activity being attributed to Department of Defense spending.



## JOINT CHNA

This is a “joint CHNA report,” within the meaning of Treas. Reg. §1.501(r)-3(b)(6)(v), by and for Hampton Roads including Bon Secours Mary Immaculate Hospital, Bon Secours Maryview Medical Center, and Bon Secours Southampton Medical Center. This report reflects the hospitals’ collaborative efforts to conduct an assessment of the health needs of the community they serve. Each of the hospitals included in this joint CHNA report define its community to be the same as the other included hospitals. The assessment included is seeking and receiving input from that community.



# Process and Methods

## Process and methods to conduct the community health needs assessment:

A collaborative team from Bon Secours Hampton Roads, Children's Hospital of The King's Daughters, Sentara Healthcare, Riverside Health System and the Virginia Department of Health began meeting in 2021 to begin the work on the 2022 Community Health Needs Assessment. This collaborative met monthly to discuss progress on prior CHNAs, develop a market-wide CHNA survey to disseminate throughout the Hampton Roads community, and to develop a distribution strategy for the CHNA survey.

The Community Health Needs Assessment Survey (survey) was disseminated between November 2021 and March 2022 to the Hampton Roads Community. The survey was distributed widely through the Hampton Roads community through networks, community meetings, clinics and programs supported by Bon Secours Hampton Roads and CHNA collaborative partners. To obtain input from the community stakeholders and community members, the online and hard-copy survey was disseminated throughout Hampton Roads. In addition, community focus groups were held throughout Hampton Roads.

The survey was taken by 17,000 residents and key stakeholders throughout the Hampton Roads community. Respondents represented the general population, civic leagues, the faith community, local businesses, local government, and other sectors. Individuals were asked to identify the top health issues, services, and areas of improvement they thought should be addressed in their community. Of those who provided responses to the demographic questions asked in the survey, 57% identified as being 55 years of age or older, while 42% of respondents identified as falling between 25-54 years of age. Most respondents chose English as their primary spoken language. Nearly 79% of survey respondents identified as White, followed by 15% who identified as Black. 71% of respondents identified as female.

Community focus groups were held throughout the duration of the survey period. The focus groups were conducted in-person and virtually to ensure residents were provided multiple opportunities to share feedback regarding their community. Because the survey presented limitations in getting feedback with respect to diversity, equity and inclusion, the focus groups were used to solicit feedback from populations that were not adequately represented through that effort.

Epidemiological data was gathered through GHRConnects.org, Metopio, Robert Wood Johnson Foundation County Health Rankings, and other publicly available sources. Data include health factors such as disease state mortalities, provider ratios, social and environmental factors, and other health behaviors. These data were aggregated to be representative of the Hampton Roads community and were compared against data for neighboring communities and Virginia overall for consideration of significant health needs in this community.



Bon Secours Hampton Roads' executive leadership team met to review primary and secondary data gathered through the CHNA process (community meetings, community and key stakeholder surveys, and meetings with regional health systems and health departments). Recognizing the importance of each of the health concerns identified, the team evaluated them, the health system's strategic goals, services currently provided, and the current CHNA Implementation Plan's progress. Based on these criteria, the team narrowed their focus to the top health concerns selected by both the community and key stakeholders. The team then determined the areas in which they could have the greatest impact.

#### **External sources**

- [www.ghrconnects.org](http://www.ghrconnects.org)
- [www.countyhealthrankings.org](http://www.countyhealthrankings.org)
- [www.metop.io](http://www.metop.io)
- [www.vdh.virginia.gov/data/#](http://www.vdh.virginia.gov/data/#)



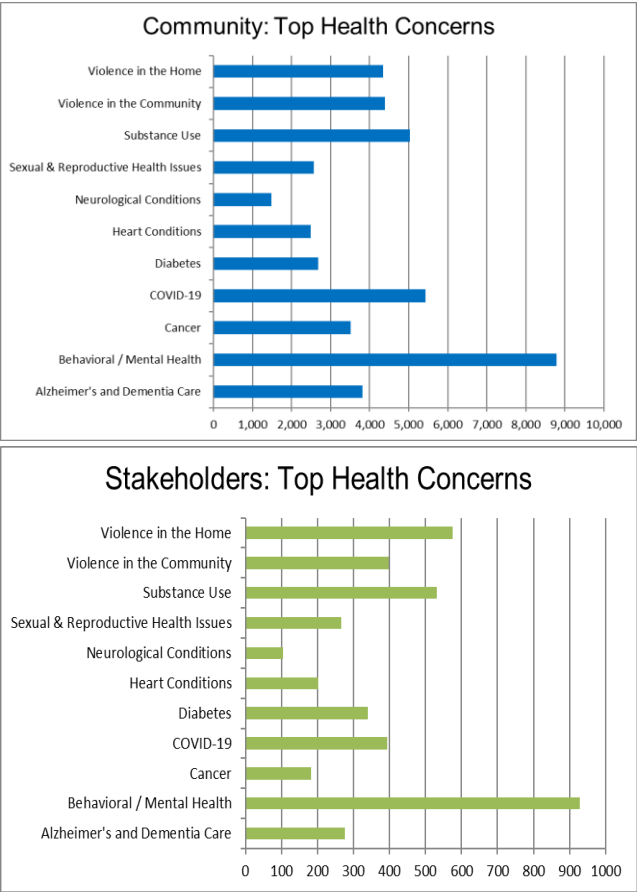
# Community Input

The CHNA survey was conducted between November 2021-March 2022. General themes that arose from the survey include a desire by the community to improve access to mental health services in schools, community safety, and healthy food access. Top health concerns included behavioral and mental health, COVID-19, substance use disorders, and violence in the community.

## Top Health Concerns

Survey respondents from the community were asked to identify the top three most important health concerns within their communities. Top areas of concern included behavioral and mental health, COVID-19, substance use disorders, and violence in the community and home.

Top health concerns identified by community stakeholders include behavioral and mental health, substance use disorders, violence in the community and home, and COVID-19.

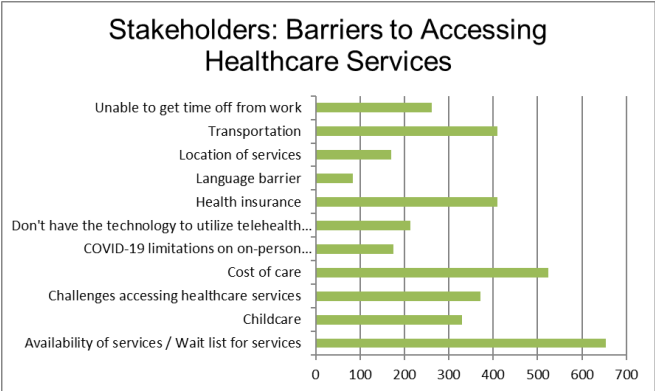
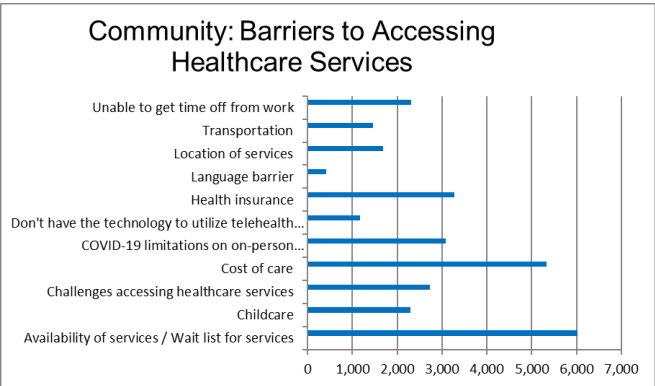




Barriers to Accessing Healthcare Services

Survey respondents identified lack of availability, costs of services, and health insurance as barriers to accessing healthcare services.

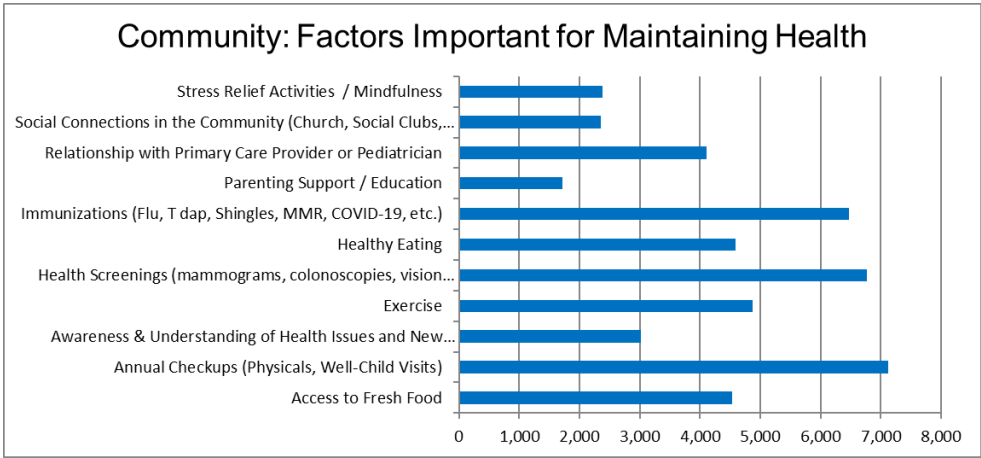
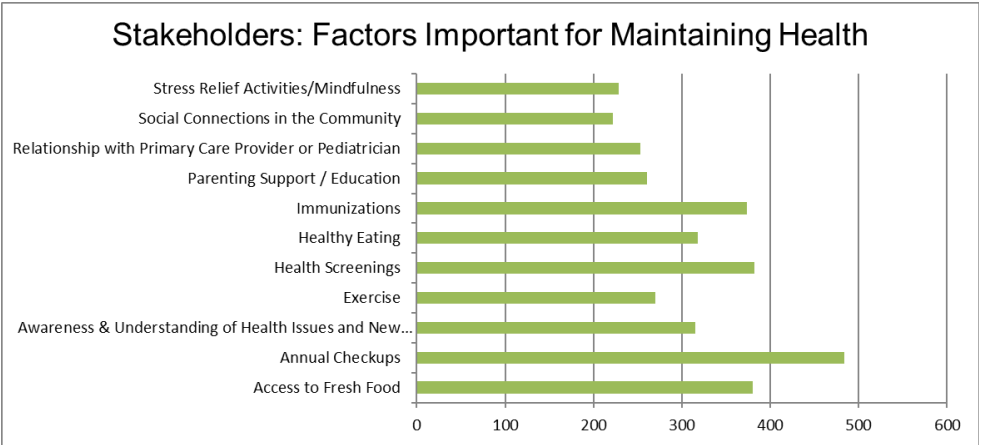
Community stakeholders also felt similarly about the barriers to accessing healthcare services while noting that transportation was viewed as an additional barrier for the constituents they represent.



Factors for Health Maintenance

Community survey respondents identified annual checkups, health screenings, immunizations, exercise, healthy eating and access to fresh foods as top factors for health maintenance.

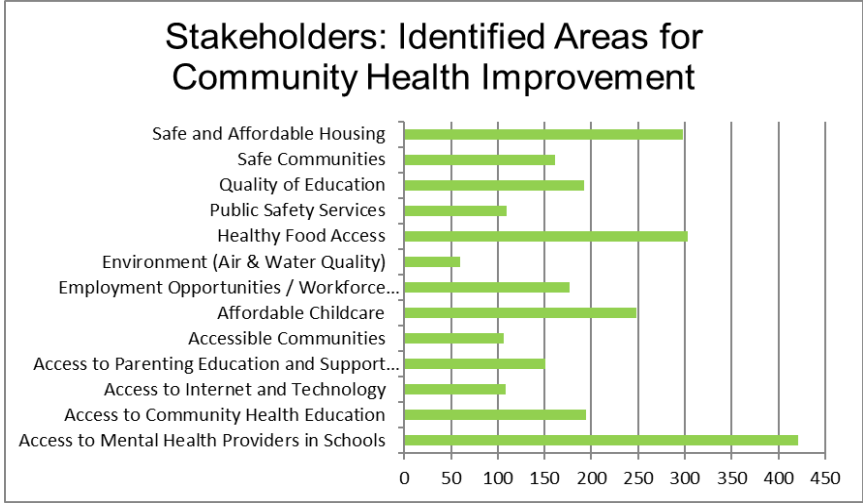
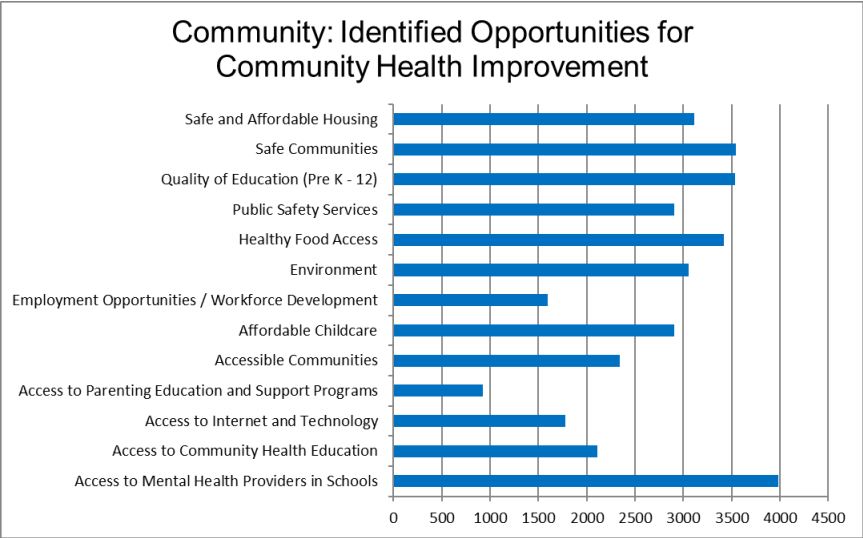
These identified factors were also reflected in the responses from community stakeholders.



Identified Opportunities for Community Health Improvement

Survey respondents identified several opportunities for community health improvement, including safety, quality of education, healthy food access, and access to mental health services in the school environment.

Community stakeholders identified access to mental health providers in schools, safe and affordable housing, healthy food access, and affordable childcare as top areas for improvement.



Community dialogues were conducted between February and April 2022, resulting in additional feedback from over 100 participants. The following are major themes that arose from the sessions:

- 

Figure 1. Wordcloud of Community Dialogue Feedback

A more detailed summary from the community focus groups can be found in Appendix C.

Bon Secours Hampton Roads did not receive any written comments pertaining to the 2019-2022 CHNA.

# Information and Data Considered in Identifying Potential Need

Information and data sources: federal, state or local health or other departments or agencies; community input

| Public health departments<br>(T.R. §1.501(r)-3(b)(5)(i)(a)) | Date of data/information |
|---|--------------------------|
| Virginia Department of Health                               | April 2022               |

| At-risk populations<br>(T.R. §1.501(r)-3(b)(5)(i)(b)) | Date of data/information |
|---|--------------------------|
| Community Focus Group                                 | 2/16/22                  |
| Community Focus Group                                 | 3/18/22                  |
| Community Focus Group                                 | 3/24/22                  |
| Community Focus Group                                 | 3/29/22                  |
| Community Focus Group                                 | 4/7/22                   |
| Community Focus Group                                 | 4/16/22                  |
| Community Focus Group                                 | 4/18/22                  |

| Community and Stakeholder Input | Date of data/information   |
|---------------------------------|----------------------------|
| CHNA Community Survey           | November 2021 – March 2022 |
| Community Focus Groups          | February 2022 – April 2022 |



## Organizations providing input

Community stakeholders who represent organizations throughout Hampton Roads were identified by CHNA collaborative members. Organizations include health departments, health systems and other healthcare providers, community-based organizations, local government, faith community representatives, and organizations representing the business community. Stakeholders were identified based on the sectors they represent and services their organizations provide to the community. Organizations broadly represent and serve medically-underserved, low-income, and/or minority populations. 1,513 stakeholder survey responses were received, representing 304 unique organizations. A complete listing of the organizations that participated in the CHNA survey can be found in Appendix B.

Organizations that participated in the community dialogues include: Elizabeth River Project, Virginia Cooperative Extension, New Hope Baptist Church, St. George Episcopal Church, StoreHouse Food Pantry and First Baptist Church of Newport News.

| Organization  | Nature and Extent of Input                           | Medically Underserved, Low Income, or Minority Population Represented By Participating Organizations |
|---|--|--|
| <b>Elizabeth River Project</b>  | Participated in community focus groups and dialogues | Low Income and Minority Populations  |
| <b>Virginia Cooperative Extension</b>   | Participated in community focus groups and dialogues | Low Income and Minority Populations  |
| <b>New Hope Baptist Church</b>  | Participated in community focus groups and dialogues | Low Income and Minority Populations  |
| <b>St. George Episcopal Church</b>  | Participated in community focus groups and dialogues | Low Income and Minority Populations  |
| <b>StoreHouse Food Pantry</b>   | Participated in community focus groups and dialogues | Low Income and Minority Populations  |
| <b>First Baptist Church of Newport News</b>                                   | Participated in community focus groups and dialogues | Low Income and Minority Populations  |
| <b>Children's Hospital of the King's Daughters</b>                            | CHNA collaborative member                            | Medically Underserved, Low Income, and Minority Populations  |
| <b>Riverside Health System</b>  | CHNA collaborative member                            | Medically Underserved, Low Income, and Minority Populations  |
| <b>Sentara Healthcare</b>   | CHNA collaborative member                            | Medically Underserved, Low Income, and Minority Populations  |
| <b>Virginia Department of Health – Peninsula and Hampton Health Districts</b> | CHNA collaborative member                            | Medically Underserved, Low Income, and Minority Populations  |





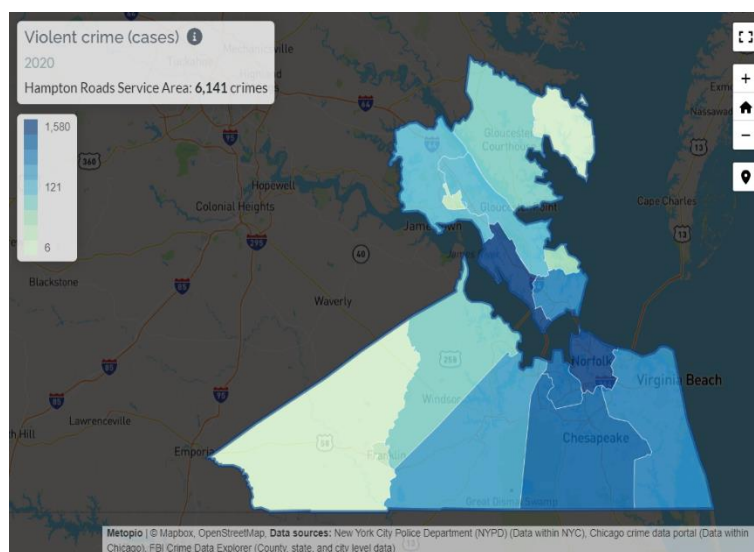
# Significant Community Identified Health Needs

## Social Determinant of Health – Community Level Needs that Impact Health and Wellbeing

### Violence in the Community

#### Capacity and adequacy of service levels

Violence in the community is a significant social determinant of health throughout Hampton Roads. The violent crime rate across Hampton Roads is 265 per 100,000 compared to Virginia's rate of 207 per 100,000, the homicide rate across Hampton Roads is 9 per 100,000 compared to Virginia's rate of 5 per 100,000, and firearm fatality rate across Hampton Roads is 16 per 100,000 compared to



Virginia's rate of 12 per 100,000. Violence is addressed through Bon Secours Hampton Roads' Family Focus program and medical intervention is provided by Bon Secours Hampton Roads emergency departments. While there are several organizations working to address community violence, there is a need for additional interventions to reduce incidences of community violence.

#### Current service providers or resources

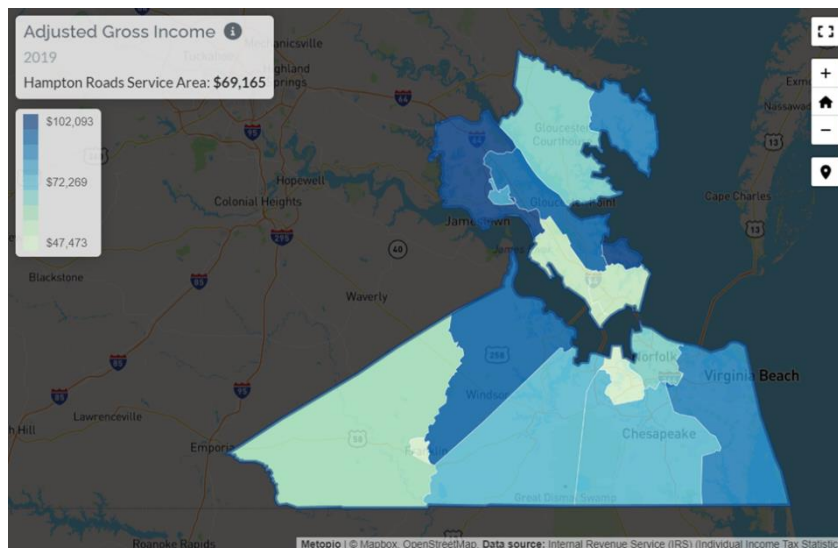
- Bon Secours Hampton Roads – Family Focus
- Bon Secours Hampton Roads – Emergency Departments
- Law Enforcement
- Civic Leagues
- Community Development Corporations
- Elizabeth River Project
- Virginia Cooperative Extension



## Workforce Development

### Capacity and adequacy of service levels

Access to a just wage continues to be a significant determinant of the financial well-being of community members in Hampton Roads. The median household income in Hampton Roads is \$69,165 compared to the state average of \$76,500. The percent of children in poverty is 17.3%



in Hampton Roads compared to Virginia's average of 13.0%. Bon Secours Hampton Roads has several affiliations with local schools to provide opportunities for healthcare education. Additionally, each locality in Hampton Roads continues to be identified as a Medically Underserved Area (MUA) and Health Professional Shortage Area (HPSA), both demonstrating a need for workforce capacity building to address the primary care needs of the community.

### Current service providers or resources

- Local undergraduate and community colleges and universities
- Hampton Roads Workforce Council
- New Horizons Technical School



## Social Health Need – Individual Level Non-Clinical Needs

### Substance Use Disorders

#### Capacity and adequacy of service levels

Substance use disorders lead to disruptions in the physical and mental well-being of community members. The opioid hospitalization rate across Hampton Roads is 6.0 per 100,000 compared to Virginia's rate of 3.7 per 100,000 while the substance use hospitalization rate across Hampton Roads is 9.0 per 100,000 compared to Virginia's rate of 7.2 per 100,000. Behavioral health services are offered across the Bon Secours Hampton Roads footprint. While there are several organizations working to address substance use disorders, there is a need for additional interventions to reduce mortalities attributed to substance use disorders.

#### Current service providers or resources

- Bon Secours Hampton Roads – MMC Behavioral Health Unit
- Bon Secours Hampton Roads – SMC Detox Unit
- Peninsula Community Opioid Response
- ACCESS Partnership
- Affinity Healthcare Group Newport News LLC
- American Addiction Treatment Center
- Catholic Charities of Eastern Virginia
- Chesapeake Regional Medical Center
- Children's Hospital of the King's Daughters
- Drug Rehab – Hampton and Newport News
- Hampton Newport News CSB Southeastern Family Project
- Hampton Roads Community Health Center(s)
- Hampton Roads Clinic Opioid Treatment Program
- Jewish Family Services
- Lackey Clinic
- Lake Taylor Hospital
- Norfolk Department of Public Health
- Newport News Behavioral Health Center
- Newport News Substance Abuse Treatment
- Peninsula Alcohol Safety Action Program
- Riverside Health System
- Sentara Healthcare
- The Barry Robinson Center
- Veterans Affairs Medical Center
- Virginia Department of Health



## Physical Inactivity

### Capacity and adequacy of service levels

Physical inactivity may be attributed to lack of safe, community-based open spaces, busy lifestyles, or inability to afford organized exercise opportunities. Physical inactivity can lead to adverse health conditions, including obesity, heart disease, and other ailments. The percent of physical inactivity is 25% in Hampton Roads compared to Virginia's average of 22%. Bon Secours Hampton Roads InMotion offers physical therapy and sports medicine services. Additionally, Bon Secours Hampton Roads offers Passport to Health, a health and wellness curriculum that provides information on nutrition, health topics, and physical activity. While there are several organizations working to address physical activity, rates of obesity and physical inactivity continue to increase.

### Current service providers or resources

- Bon Secours Hampton Roads – InMotion
- Bon Secours Hampton Roads – Passport to Health
- Elizabeth River Project – Paradise Creek Nature Park
- Local Departments of Parks and Recreation
- Peninsula Agency on Aging
- Senior Services of Southeastern Virginia
- Prime Plus
- YMCA of South Hampton Roads
- YMCA of the Virginia Peninsulas



## Significant Clinical Health Needs

### Diabetes

#### Capacity and adequacy of service levels

Diabetes is a significant health disparity in the Hampton Roads community. The diabetes mortality rate across Hampton Roads is 30.6 per 100,000 compared to Virginia's rate of 23.5 per 100,000 while the diabetes hospitalization rate is 26.2 per 100,000 compared to Virginia's rate of 20.7 per 100,000. Diabetes management and educational services are offered across the Bon Secours Hampton Roads footprint. The need for continued efforts to address diabetes are evident.

#### Current service providers or resources

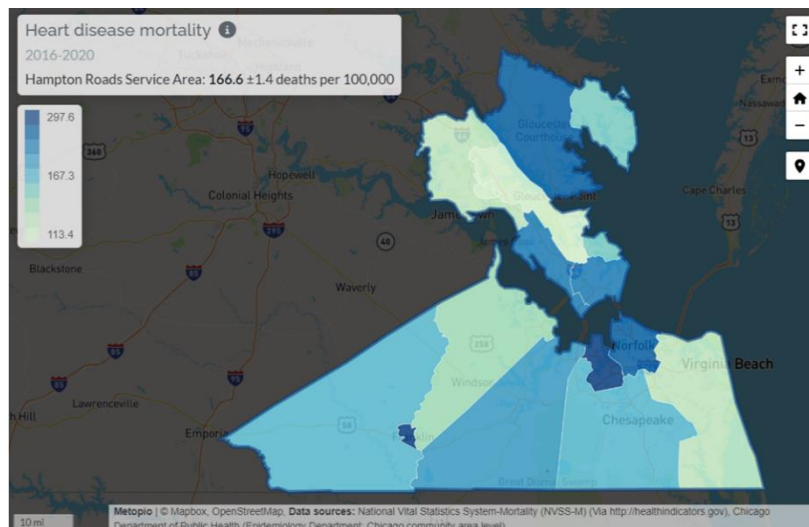
- Bon Secours Hampton Roads - Glycemic Control
- American Diabetes Association
- Chesapeake Regional Healthcare
- Children's Hospital of the King's Daughters
- Hampton Roads Community Health Centers
- Lackey Clinic
- Lake Taylor Hospital
- Riverside Health System
- Sentara Healthcare
- Southeastern Virginia Health System
- Tidewater Physicians Medical Group
- Veterans Affairs Medical Center
- Virginia Department of Health



## Heart Disease

## Capacity and adequacy of service levels

The heart disease mortality rate across Hampton Roads is 166.6 per 100,000 compared to Virginia's rate of 149.6 per 100,000. Cardiovascular health management and educational services are offered across the Bon Secours Hampton Roads footprint. While there are several organizations working to address heart disease, there is a need for additional interventions to reduce heart disease mortalities.



### Current service providers or resources

- Bon Secours Hampton Roads – Cardiovascular service line
- American Heart Association
- Chesapeake Regional Medical Center
- Children’s Hospital of the King’s Daughters
- Diabetes Self-Management Program
- Foodbank of Southeast Virginia and the Eastern Shore
- Geriatrics Life Care
- Hampton Roads Community Health Centers
- Lackey Clinic
- Lake Taylor Hospital
- Riverside Health System
- Sentara Healthcare
- Tidewater Physicians Medical Group
- Veterans Affairs Medical Center
- Virginia Department of Health
- Virginia Peninsula FoodBank
- YMCA of South Hampton Roads
- YMCA of the Virginia Peninsulas

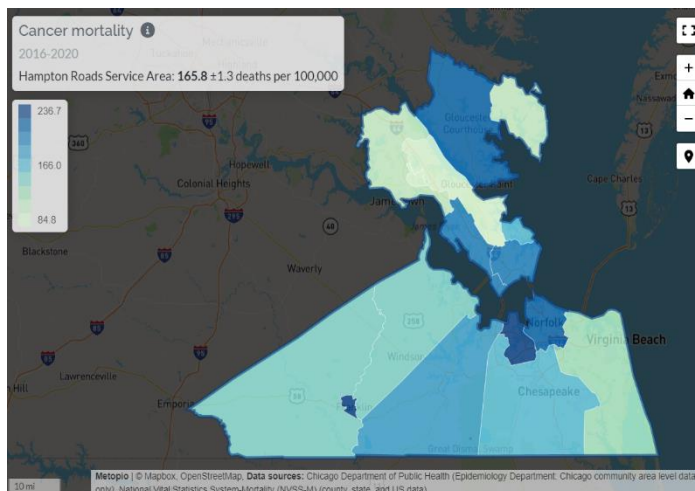


## Cancer

### Capacity and adequacy of service levels

The cancer mortality rate across Hampton Roads is 165.8 per 100,000 compared to Virginia's rate of 152.4 per 100,000 while the adult cancer percentage among Hampton Roads residents is 7.3% compared to 7.1% in Virginia. Mammography screenings are at 48% throughout Hampton Roads compared to 43% across Virginia. Oncological health management and educational services are offered across the Bon Secours Hampton Roads footprint by several organizations.

While there are several organizations working to address cancer, there is a need for additional interventions to reduce cancer mortalities.



### Current service providers or resources

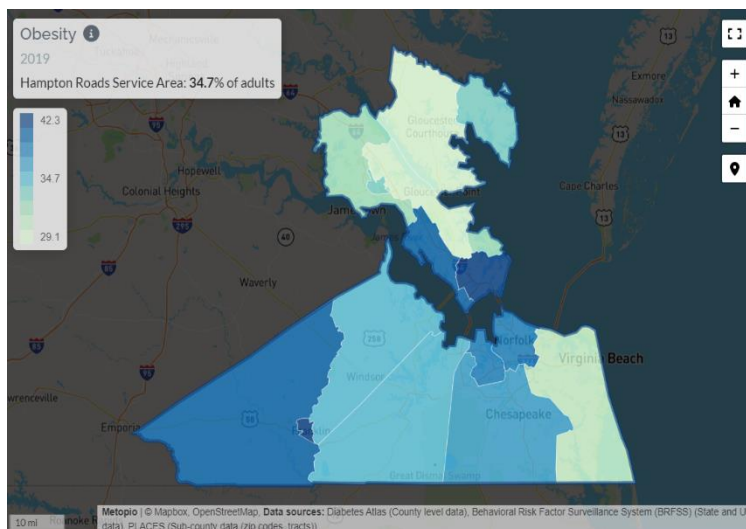
- Bon Secours Hampton Roads – Oncology service line
- Chesapeake Regional Medical Center
- Children's Hospital of the King's Daughters
- Geriatrics Life Care
- Hampton Roads Community Health Centers
- Lackey Clinic
- Lake Taylor Hospital
- Riverside Health System
- Sentara Healthcare
- Southeastern Virginia Health System
- Tidewater Physicians Medical Group
- Veterans Affairs Medical Center
- Virginia Department of Health



## Adult Obesity

### Capacity and adequacy of service levels

The adult obesity percentage across Hampton Roads is 35% compared to 31% across Virginia. Weight health management and educational services are offered across the Bon Secours Hampton Roads footprint. Bon Secours Hampton Roads offers Passport to Health, a health and wellness curriculum that provides information on nutrition, health topics, and physical activity, as well as lunch & learns throughout the year to build awareness of risk factors for obesity. In addition to services provided by Bon Secours Hampton Roads, there are additional services offered by other community organizations in Hampton Roads. While there are several organizations working to address obesity, there is a need for additional interventions to reduce obesity in the Hampton Roads community.



### Current service providers or resources

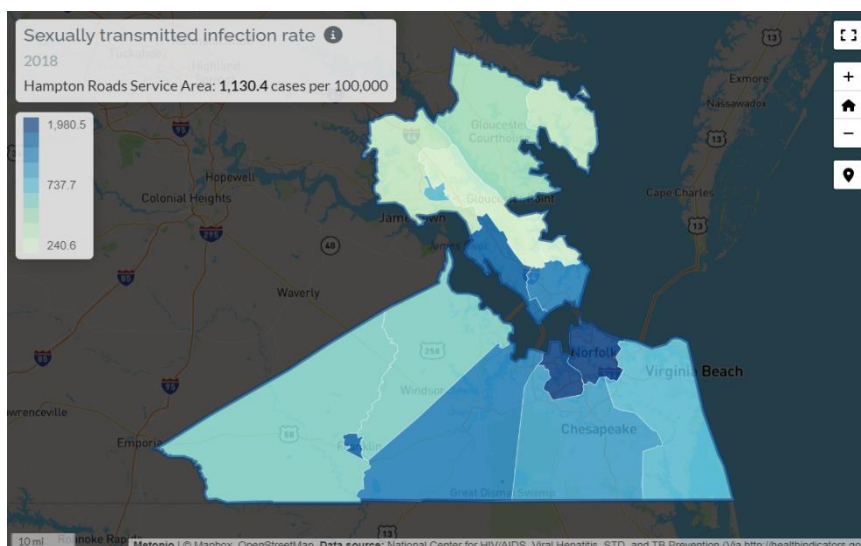
- Bon Secours Hampton Roads – Bariatric service line
- Bon Secours Hampton Roads – Passport to Health
- Chesapeake Regional Medical Center
- Children’s Hospital of the King’s Daughters
- Diabetes Self-Management Program
- Foodbank of Southeast Virginia and the Eastern Shore
- Geriatrics Life Care
- Hampton Roads Community Health Centers
- Lackey Clinic
- Lake Taylor Hospital
- Riverside Health System
- Sentara Healthcare
- Southeastern Virginia Health System
- Tidewater Physicians Medical Group
- Veterans Affairs Medical Center
- Virginia Department of Health
- Virginia Peninsula FoodBank
- YMCA of South Hampton Roads
- YMCA of the Virginia Peninsulas



## Sexually Transmitted Infections

### Capacity and adequacy of service levels

The STI rate across Hampton Roads is 1130.4 per 100,000 compared to Virginia's rate of 507.3 per 100,000. Bon Secours Hampton Roads refers patients to the local health departments for follow-up treatment and education. While there are several organizations working to address sexually transmitted infections, there is a need for additional interventions to reduce rates in the Hampton Roads community.



### Current service providers or resources

- Local Health Departments
- Hampton Roads Community Health Centers
- HELP Clinic
- LGBT Life Center
- Minority AIDS Support Services, Inc.
- Old Towne Medical Center
- Planned Parenthood
- Southeastern Virginia Health System



# Prioritization of Health Needs

Members of Bon Secours Hampton Roads Executive Leadership Team held an hour meeting in April 2022 to discuss the findings from the CHNA survey, community focus groups, and data collection processes. Recognizing the importance of each of the health concerns identified, the team evaluated them, the market's strategic goals, services currently provided, and the current CHNA Implementation Plan's progress. Based on these criteria, the team prioritized the following health and social needs of the community to be addressed by Bon Secours Hampton Roads.

## Prioritized Social Determinants of Health Needs

### **Neighborhood and Built Environment – Violence in the Community**

Violence in the community was prioritized based on community feedback, information gathered from the data collection process, and Bon Secours Hampton Roads' involvement in community-based interventions that are taking place to address the root causes of violence in the community.

### **Economic Stability – Workforce Development**

Workforce development was prioritized based on community feedback, information gathered from the data collection process, and Bon Secours Hampton Roads' involvement community-based interventions that are taking place to address access to employment opportunities with just wages.

## Prioritized Social Health Needs

### **Healthcare Access – Mental and Behavioral Health, including Substance Use Disorders**

Healthcare Access – Mental and Behavioral Health was prioritized based on community feedback, information gathered from the data collection process, and Bon Secours Hampton Roads' involvement community-based interventions that are taking place to address substance use disorders, opioid dependency, and other mental health services throughout the market.

## Prioritized Clinical Health Needs

### **Healthcare Access - Chronic Health Conditions**

Healthcare Access – Chronic Health Conditions was prioritized based on community feedback, information gathered from the data collection process, and Bon Secours Hampton Roads' involvement community-based interventions that are taking place to address diabetes and heart disease throughout the market.



# Resources Available to Meet Prioritized Needs

The existing healthcare facilities and other resources within the community that are available to meet the prioritized needs are listed below for each need

## Prioritized Social Determinants of Health Needs

### **Neighborhood and Built Environment – Violence in the Community**

- BSHR Community Health – Family Focus
- Civic Leagues
- Community Development Corporations
- Elizabeth River Project
- Law Enforcement
- Virginia Cooperative Extension

### **Economic Stability – Workforce Development**

- Local undergraduate and community colleges
- Hampton Roads Workforce Council
- New Horizons Technical School

## Prioritized Social Health Needs

### **Healthcare Access – Mental and Behavioral Health, including Substance Use Disorders**

- Bon Secours Hampton Roads – MMC Behavioral Health Unit
- Bon Secours Hampton Roads – SMC Detox Unit
- ACCESS Partnership
- Affinity Healthcare Group Newport News LLC
- American Addiction Treatment Center
- Catholic Charities of Eastern Virginia
- Chesapeake Regional Medical Center
- Children's Hospital of the King's Daughters
- Drug Rehab – Hampton
- Drug Rehab – Newport News
- Hampton Newport News CSB Southeastern Family Project
- Hampton Roads Community Health Center(s)
- Hampton Roads Clinic Opioid Treatment Program
- Jewish Family Services
- Lackey Clinic



- Lake Taylor Hospital
- Norfolk Department of Public Health
- Newport News Behavioral Health Center
- Newport News Substance Abuse Treatment
- Peninsula Alcohol Safety Action Program
- Peninsula Community Opioid Response
- Riverside Health System
- Sentara Healthcare
- The Barry Robinson Center
- Veterans Affairs Medical Center
- Virginia Department of Health

## Prioritized Clinical Health Needs

### Healthcare Access - Chronic Health Conditions

- Bon Secours Hampton Roads – Bariatric service line
- Bon Secours Hampton Roads – Passport to Health
- Bon Secours Hampton Roads – Cardiovascular service line
- Bon Secours Hampton Roads - Glycemic Control
- ACCESS Partnership
- American Diabetes Association
- American Heart Association
- Chesapeake Regional Medical Center
- Children's Hospital of the King's Daughters
- Diabetes Self-Management Program
- Foodbank of Southeast Virginia and the Eastern Shore
- Geriatrics Life Care
- Hampton Roads Community Health Center(s)
- Lackey Clinic
- Lake Taylor Hospital
- Riverside Health System
- Sentara Healthcare
- Tidewater Physicians Medical Group
- Veterans Affairs Medical Center
- Virginia Department of Health
- Virginia Peninsula FoodBank





# Progress on Health Priorities Identified on the 2019-2021 Community Health Needs Assessment

## Alcohol and Substance Use Disorders

| Initiative  | Impact   |
|---|--|
| Reduce risk of opioid dependency and addiction in community | <ul style="list-style-type: none"><li>• Opioid prescription metrics established and monitored regularly in each facility.</li><li>• Opioid education provided in community settings.</li><li>• BSHR associates received Narcan train-the-trainer education to raise awareness of intervening in opioid overdose situations.</li><li>• BSHR associates assumed leadership positions on Peninsula Community Opioid Response to increase community awareness of opioid risks</li><li>• Emergency department personnel have received SBIRT and MAT training and have implemented both endeavors.</li></ul> |

## Chronic Health Conditions in Aging Adults

| Initiative  | Impact  |
|---|---|
| Improve access to healthcare opportunities to treat and manage chronic conditions in aging adults | <ul style="list-style-type: none"><li>• Community education has been provided to increase awareness of diabetes, cancer, heart health, nutrition, and weight management.</li><li>• NICHE designation awarded to Mary Immaculate Hospital, recognizing the facility's commitment to the quality of care delivery for aging adults.</li></ul> |



## Heart Conditions and Diabetes

| Initiative  | Impact  |
|---|---|
| Improve access to healthcare opportunities to treat and manage cardiovascular disease and diabetes. | <ul style="list-style-type: none"><li>CHF and STEMI metrics established and monitored regularly in each facility.</li><li>Community education has been provided to increase awareness of cardiovascular health and diabetes.</li><li>Establishment of community partnerships to develop care coordination network for chronic disease management, such as diabetes.</li></ul> |

## Overweight/Obesity

| Initiative  | Impact   |
|---|--|
| Improve access to healthcare opportunities to treat and manage obesity. | <ul style="list-style-type: none"><li>Community education has been provided to increase awareness of diabetes, cancer, heart health, and weight management.</li><li>Passport to Health has been provided throughout the community to increase awareness of nutrition, exercise, and health topics.</li></ul> |



# Appendix A

CHNA Survey

Let Your Voice Be Heard

This brief survey is being conducted jointly by Bon Secours Hampton Roads, Children's Hospital of The King's Daughters, Riverside Health System, Sentara Healthcare, the Hampton and Peninsula Health Districts, and Three Rivers Health District. This is not a VDH Central Office Survey.

The survey will take 5-10 minutes to complete and the results will help us identify community health risks for us to prioritize. It will also help us find possible ways to affect change. We thank you for sharing your thoughts about your community.

\* 1. Are you taking this survey as a community member or are you a professional working in community health, public health, medical, behavioral health services, social services or other community-based organization or business?

- ☐ I am a community member answering for myself and my family
- ☐ I am responding on behalf of a community organization or business



## Stakeholder: Your Community

\* 2. Below is a list of Virginia and North Carolina communities. Please tell us which localities you view as the community you serve. (Check all that apply even if your perspective only includes one part of a city or county).

- |  |   |   |
|--|---|---|
| <input type="checkbox"/> Accomack County, VA           | <input type="checkbox"/> Louisa County, VA          | <input type="checkbox"/> Surry County, VA             |
| <input type="checkbox"/> Charles City County, VA       | <input type="checkbox"/> Mathews County, VA         | <input type="checkbox"/> Sussex County, VA            |
| <input type="checkbox"/> Charlottesville (City of), VA | <input type="checkbox"/> Middlesex County, VA       | <input type="checkbox"/> Virginia Beach (City of), VA |
| <input type="checkbox"/> Chesapeake (City of), VA      | <input type="checkbox"/> Nelson County, VA          | <input type="checkbox"/> Westmoreland County, VA      |
| <input type="checkbox"/> Dumfries (Town of), VA        | <input type="checkbox"/> New Kent County, VA        | <input type="checkbox"/> Williamsburg (City of), VA   |
| <input type="checkbox"/> Essex County, VA              | <input type="checkbox"/> Newport News (City of), VA | <input type="checkbox"/> York County, VA              |
| <input type="checkbox"/> Fluvanna County, VA           | <input type="checkbox"/> Norfolk (City of), VA      | <input type="checkbox"/> Albemarle County, NC         |
| <input type="checkbox"/> Franklin (City of), VA        | <input type="checkbox"/> Northampton County, VA     | <input type="checkbox"/> Bertie County, NC            |
| <input type="checkbox"/> Gloucester County, VA         | <input type="checkbox"/> Northumberland County, VA  | <input type="checkbox"/> Camden County, NC            |
| <input type="checkbox"/> Greene County, VA             | <input type="checkbox"/> Poquoson (City of), VA     | <input type="checkbox"/> Chowan County, NC            |
| <input type="checkbox"/> Hampton (City of), VA         | <input type="checkbox"/> Portsmouth (City of), VA   | <input type="checkbox"/> Currituck County, NC         |
| <input type="checkbox"/> Isle of Wight County, VA      | <input type="checkbox"/> Prince William County, VA  | <input type="checkbox"/> Dare County, NC              |
| <input type="checkbox"/> James City County, VA         | <input type="checkbox"/> Quantico (City of), VA     | <input type="checkbox"/> Gates County, NC             |
| <input type="checkbox"/> King and Queen County, VA     | <input type="checkbox"/> Richmond County, VA        | <input type="checkbox"/> Hertford County, NC          |
| <input type="checkbox"/> King William County, VA       | <input type="checkbox"/> Southampton County, VA     | <input type="checkbox"/> Pasquotank County, NC        |
| <input type="checkbox"/> Lancaster County, VA          | <input type="checkbox"/> Suffolk (City of), VA      | <input type="checkbox"/> Perquimans County, NC        |
| <input type="checkbox"/> Lorton (City of), VA          | <input type="checkbox"/> Stafford County, VA        |   |



Stakeholder: Organizational Affiliation

\* 3. Please select from the list below the type of employer or organization you most identify with as you complete this survey.

- ☐ State, local or regional health departments
- ☐ Members of the medically underserved, low-income and minority populations or organizations representing medically underserved, low-income and minority populations
- ☐ Health care consumers and consumer advocates
- ☐ Nonprofit and community-based organizations
- ☐ Academic experts
- ☐ Local government officials
- ☐ Local school districts
- ☐ Health care providers and community health centers
- ☐ Health insurance and managed care organizations
- ☐ Private businesses
- ☐ Labor and workforce representatives
- ☐ Military Representatives
- ☐ Civic Organizations

4. Please share your organization's name and position.

We are asking for contact information ONLY to assure completeness of your survey response or for follow-up questions. Your response will not be used in any publication or public presentation of the survey results without your permission.

|                         |                      |
|-------------------------|----------------------|
| Organization            | <input type="text"/> |
| My Role in Organization | <input type="text"/> |



## Stakeholder: For Your Community

5. Please check the **TOP 3** items below that you feel are important to the health of **BOTH** the adults **AND** children you serve.

|   | Adults                   | Children                 |
|---|--------------------------|--------------------------|
| Access to Fresh Food  | <input type="checkbox"/> | <input type="checkbox"/> |
| Annual Checkups<br>(Physicals, Well-Child<br>Visits)  | <input type="checkbox"/> | <input type="checkbox"/> |
| Awareness &<br>Understanding of Health<br>Issues and New<br>Treatments                            | <input type="checkbox"/> | <input type="checkbox"/> |
| Exercise  | <input type="checkbox"/> | <input type="checkbox"/> |
| Health Screenings<br>(mammograms,<br>colonoscopies, vision<br>exams, cholesterol<br>checks, etc.) | <input type="checkbox"/> | <input type="checkbox"/> |
| Healthy Eating  | <input type="checkbox"/> | <input type="checkbox"/> |
| Immunizations (Flu, T<br>dap, Shingles, MMR,<br>COVID-19, etc.)                                   | <input type="checkbox"/> | <input type="checkbox"/> |
| Parenting Support /<br>Education  | <input type="checkbox"/> | <input type="checkbox"/> |
| Relationship with<br>Primary Care Provider or<br>Pediatrician                                     | <input type="checkbox"/> | <input type="checkbox"/> |
| Social Connections in<br>the Community (Church,<br>Social Clubs, Athletics<br>Groups)             | <input type="checkbox"/> | <input type="checkbox"/> |
| Stress Relief Activities /<br>Mindfulness   | <input type="checkbox"/> | <input type="checkbox"/> |



6. Please check the **TOP 3** areas you would like to see added or improved in your community to keep **BOTH** the adults **AND** children you serve healthy.

- ☐ Access to Mental Health Providers in Schools (Pre-K - 12)
- ☐ Access to Community Health Education (such as Nutrition Education, Support for Individuals who Care for those with Dementia, etc.)
- ☐ Access to Internet and Technology
- ☐ Access to Parenting Education and Support Programs (MOPS, Military Family Readiness, Postpartum Support Groups, etc.)
- ☐ Accessible Communities (Transportation, Parks, Sidewalks, Community Spaces)
- ☐ Affordable Childcare
- ☐ Employment Opportunities / Workforce Development
- ☐ Environment (Air & Water Quality)
- ☐ Healthy Food Access (Fresh Foods, Community Gardens, Farmers' Markets, EBT, WIC)
- ☐ Public Safety Services (Police, Fire, EMT)
- ☐ Quality of Education (Pre K - 12)
- ☐ Safe Communities (Transportation, Parks, Sidewalks, Community Spaces)
- ☐ Safe and Affordable Housing

7. If someone you serve were to experience any of the below situations, would you know how to help them access community assistance?

|  | Yes                   | No                    |
|--|-----------------------|-----------------------|
| Addiction to Alcohol, Gambling, Narcotics, etc.  | <input type="radio"/> | <input type="radio"/> |
| Emergency Medical Situation (Chest Pain, Shortness of Breath, Slurred Speech, Head Injury) | <input type="radio"/> | <input type="radio"/> |
| Housing Crisis   | <input type="radio"/> | <input type="radio"/> |
| Lack of Food   | <input type="radio"/> | <input type="radio"/> |
| Mental Health Crisis (Suicidal Thoughts or Threatening to Harm Others)                     | <input type="radio"/> | <input type="radio"/> |
| Unable to Afford Prescription Medications  | <input type="radio"/> | <input type="radio"/> |
| Urgent Medical Situation (Broken Bone, Cut that Needs Stitches)                            | <input type="radio"/> | <input type="radio"/> |

5





## Stakeholder: Community Priorities

8. Of the health issues listed below, please check the **TOP 3** most important health concerns for **BOTH** the adults **AND** children you serve in your community.

|   | Adults in the Community  | Children in the Community |
|---|--------------------------|---------------------------|
| Alzheimer's and Dementia Care   | <input type="checkbox"/> | <input type="checkbox"/>  |
| Behavioral / Mental Health (Anxiety, Depression, Psychoses, Suicide)                                    | <input type="checkbox"/> | <input type="checkbox"/>  |
| Cancer  | <input type="checkbox"/> | <input type="checkbox"/>  |
| COVID-19  | <input type="checkbox"/> | <input type="checkbox"/>  |
| Diabetes  | <input type="checkbox"/> | <input type="checkbox"/>  |
| Heart Conditions  | <input type="checkbox"/> | <input type="checkbox"/>  |
| Neurological Conditions   | <input type="checkbox"/> | <input type="checkbox"/>  |
| Sexual & Reproductive Health Issues (STIs, Teen Pregnancy)  | <input type="checkbox"/> | <input type="checkbox"/>  |
| Substance Use (Narcotics, Alcohol)  | <input type="checkbox"/> | <input type="checkbox"/>  |
| Violence in the Community   | <input type="checkbox"/> | <input type="checkbox"/>  |
| Violence in the Home (domestic or child abuse, including sexual, physical, emotional abuse and neglect) | <input type="checkbox"/> | <input type="checkbox"/>  |



## Stakeholder: Barriers

9. Please check the **TOP 3** barriers that make it difficult for **BOTH** the adults **AND** children you serve in your community to access healthcare services.

|   | Adults in the Community  | Children in the Community |
|---|--------------------------|---------------------------|
| Availability of services /<br>Wait list for services          | <input type="checkbox"/> | <input type="checkbox"/>  |
| Childcare   | <input type="checkbox"/> | <input type="checkbox"/>  |
| Challenges accessing<br>healthcare services                   | <input type="checkbox"/> | <input type="checkbox"/>  |
| Cost of care  | <input type="checkbox"/> | <input type="checkbox"/>  |
| COVID-19 limitations on<br>on-person appointments             | <input type="checkbox"/> | <input type="checkbox"/>  |
| Don't have the<br>technology to utilize<br>telehealth options | <input type="checkbox"/> | <input type="checkbox"/>  |
| Health insurance  | <input type="checkbox"/> | <input type="checkbox"/>  |
| Language barrier  | <input type="checkbox"/> | <input type="checkbox"/>  |
| Location of services  | <input type="checkbox"/> | <input type="checkbox"/>  |
| Transportation  | <input type="checkbox"/> | <input type="checkbox"/>  |
| Unable to get time off<br>from work                           | <input type="checkbox"/> | <input type="checkbox"/>  |

Other (please specify)



10. We would like to ensure that everyone in our community receives high quality care. Please consider whether there are personal factors that impact the care that adults or children you serve receive. Please check all that apply. All your answers will be kept confidential.

|  | Adults in the Family     | Children in the Family (if applicable) |
|--|--------------------------|--|
| Age  | <input type="checkbox"/> | <input type="checkbox"/>               |
| Race   | <input type="checkbox"/> | <input type="checkbox"/>               |
| Ethnicity  | <input type="checkbox"/> | <input type="checkbox"/>               |
| Immigration Status                                       | <input type="checkbox"/> | <input type="checkbox"/>               |
| Language   | <input type="checkbox"/> | <input type="checkbox"/>               |
| Sex  | <input type="checkbox"/> | <input type="checkbox"/>               |
| Gender   | <input type="checkbox"/> | <input type="checkbox"/>               |
| Level of Education                                       | <input type="checkbox"/> | <input type="checkbox"/>               |
| Intellectual Disabilities                                | <input type="checkbox"/> | <input type="checkbox"/>               |
| Physical Disabilities                                    | <input type="checkbox"/> | <input type="checkbox"/>               |
| Religious Beliefs  | <input type="checkbox"/> | <input type="checkbox"/>               |
| Sexual Orientation                                       | <input type="checkbox"/> | <input type="checkbox"/>               |
| Type of Health Insurance / Way I Pay for Health Services | <input type="checkbox"/> | <input type="checkbox"/>               |

8



Stakeholder: Additional Questions

11. Please indicate how satisfied you feel your organization is addressing diversity, equity and inclusion (DEI).

- ☐ Very satisfied
- ☐ Satisfied
- ☐ Neither satisfied nor dissatisfied
- ☐ Dissatisfied
- ☐ Very dissatisfied

12. Please share why you gave your organization the score that you did.

13. From your perspective, how can we, as community stakeholders, best align resources to meet our community's needs?



## Community Member: Your Community

\* 14. Below is a list of Virginia and North Carolina communities. In which locality listed below do you live?

- |  |   |   |
|--|---|---|
| <input type="checkbox"/> Accomack County, VA           | <input type="checkbox"/> Louisa County, VA          | <input type="checkbox"/> Surry County, VA             |
| <input type="checkbox"/> Charles City County, VA       | <input type="checkbox"/> Mathews County, VA         | <input type="checkbox"/> Sussex County, VA            |
| <input type="checkbox"/> Charlottesville (City of), VA | <input type="checkbox"/> Middlesex County, VA       | <input type="checkbox"/> Virginia Beach (City of), VA |
| <input type="checkbox"/> Chesapeake (City of), VA      | <input type="checkbox"/> Nelson County, VA          | <input type="checkbox"/> Westmoreland County, VA      |
| <input type="checkbox"/> Dumfries (Town of), VA        | <input type="checkbox"/> New Kent County, VA        | <input type="checkbox"/> Williamsburg (City of), VA   |
| <input type="checkbox"/> Essex County, VA              | <input type="checkbox"/> Newport News (City of), VA | <input type="checkbox"/> York County, VA              |
| <input type="checkbox"/> Fluvanna County, VA           | <input type="checkbox"/> Norfolk (City of), VA      | <input type="checkbox"/> Albemarle County, NC         |
| <input type="checkbox"/> Franklin (City of), VA        | <input type="checkbox"/> Northampton County, VA     | <input type="checkbox"/> Bertie County, NC            |
| <input type="checkbox"/> Gloucester County, VA         | <input type="checkbox"/> Northumberland County, VA  | <input type="checkbox"/> Camden County, NC            |
| <input type="checkbox"/> Greene County, VA             | <input type="checkbox"/> Poquoson (City of), VA     | <input type="checkbox"/> Chowan County, NC            |
| <input type="checkbox"/> Hampton (City of), VA         | <input type="checkbox"/> Portsmouth (City of), VA   | <input type="checkbox"/> Currituck County, NC         |
| <input type="checkbox"/> Isle of Wight County, VA      | <input type="checkbox"/> Prince William County, VA  | <input type="checkbox"/> Dare County, NC              |
| <input type="checkbox"/> James City County, VA         | <input type="checkbox"/> Quantico (City of), VA     | <input type="checkbox"/> Gates County, NC             |
| <input type="checkbox"/> King and Queen County, VA     | <input type="checkbox"/> Richmond County, VA        | <input type="checkbox"/> Hertford County, NC          |
| <input type="checkbox"/> King William County, VA       | <input type="checkbox"/> Southampton County, VA     | <input type="checkbox"/> Pasquotank County, NC        |
| <input type="checkbox"/> Lancaster County, VA          | <input type="checkbox"/> Suffolk (City of), VA      | <input type="checkbox"/> Perquimans County, NC        |
| <input type="checkbox"/> Lorton (City of), VA          | <input type="checkbox"/> Stafford County, VA        |   |

\* 15. Please share your ZIP code.



## Community Member: For Your Family

16. Please check the **TOP 3** items below that you feel are important to the health of you and your family.

|   | Adults                   | Children                 |
|---|--------------------------|--------------------------|
| Access to Fresh Food  | <input type="checkbox"/> | <input type="checkbox"/> |
| Annual Checkups<br>(Physicals, Well-Child<br>Visits)  | <input type="checkbox"/> | <input type="checkbox"/> |
| Awareness &<br>Understanding of Health<br>Issues and New<br>Treatments                            | <input type="checkbox"/> | <input type="checkbox"/> |
| Exercise  | <input type="checkbox"/> | <input type="checkbox"/> |
| Health Screenings<br>(mammograms,<br>colonoscopies, vision<br>exams, cholesterol<br>checks, etc.) | <input type="checkbox"/> | <input type="checkbox"/> |
| Healthy Eating  | <input type="checkbox"/> | <input type="checkbox"/> |
| Immunizations (Flu, T<br>dap, Shingles, MMR,<br>COVID-19, etc.)                                   | <input type="checkbox"/> | <input type="checkbox"/> |
| Parenting Support /<br>Education  | <input type="checkbox"/> | <input type="checkbox"/> |
| Relationship with<br>Primary Care Provider or<br>Pediatrician                                     | <input type="checkbox"/> | <input type="checkbox"/> |
| Social Connections in<br>the Community (Church,<br>Social Clubs, Athletics<br>Groups)             | <input type="checkbox"/> | <input type="checkbox"/> |
| Stress Relief Activities /<br>Mindfulness   | <input type="checkbox"/> | <input type="checkbox"/> |



17. Please check the **TOP 3** areas you would like to see added or improved in your community to help you keep your family healthy.

- ☐ Access to Mental Health Providers in Schools (Pre-K - 12)
- ☐ Access to Community Health Education (such as Nutrition Education, Support for Individuals who Care for those with Dementia, etc.)
- ☐ Access to Internet and Technology
- ☐ Access to Parenting Education and Support Programs
- ☐ Accessible Communities (Transportation, Parks, Sidewalks, Community Spaces)
- ☐ Affordable Childcare
- ☐ Employment Opportunities / Workforce Development
- ☐ Environment (Air & Water Quality)
- ☐ Healthy Food Access (Fresh Foods, Community Gardens, Farmers' Markets, EBT, WIC)
- ☐ Public Safety Services (Police, Fire, EMT)
- ☐ Quality of Education (Pre K - 12)
- ☐ Safe Communities (Transportation, Parks, Sidewalks, Community Spaces)
- ☐ Safe and Affordable Housing

12



18. Of the health issues listed below, please check the **TOP 3** most important health concerns for **BOTH** adults **AND** children in your community.

|   | Adults in the Community  | Children in the Community |
|---|--------------------------|---------------------------|
| Alzheimer's and Dementia Care   | <input type="checkbox"/> | <input type="checkbox"/>  |
| Behavioral / Mental Health (Anxiety, Depression, Bullying, Psychoses, Suicide)                          | <input type="checkbox"/> | <input type="checkbox"/>  |
| Cancer  | <input type="checkbox"/> | <input type="checkbox"/>  |
| COVID-19  | <input type="checkbox"/> | <input type="checkbox"/>  |
| Diabetes  | <input type="checkbox"/> | <input type="checkbox"/>  |
| Heart Conditions  | <input type="checkbox"/> | <input type="checkbox"/>  |
| Neurological Conditions   | <input type="checkbox"/> | <input type="checkbox"/>  |
| Sexual & Reproductive Health Issues (STIs, Teen Pregnancy)  | <input type="checkbox"/> | <input type="checkbox"/>  |
| Substance Use (Alcohol, Drugs, Tobacco)   | <input type="checkbox"/> | <input type="checkbox"/>  |
| Violence in the Community   | <input type="checkbox"/> | <input type="checkbox"/>  |
| Violence in the Home (domestic or child abuse, including sexual, physical, emotional abuse and neglect) | <input type="checkbox"/> | <input type="checkbox"/>  |

13





19. If you or someone you know (18+) were to experience any of the below situations, would you know how to get community help?

|  | Yes                      | No                       |
|--|--------------------------|--------------------------|
| Addiction to Alcohol, Gambling, Narcotics, etc.  | <input type="checkbox"/> | <input type="checkbox"/> |
| Emergency Medical Situation (Chest Pain, Shortness of Breath, Slurred Speech, Head Injury) | <input type="checkbox"/> | <input type="checkbox"/> |
| Housing Needs (Rent, Homeless, Eviction)   | <input type="checkbox"/> | <input type="checkbox"/> |
| Lack of Food   | <input type="checkbox"/> | <input type="checkbox"/> |
| Mental Health Crisis (Suicidal Thoughts or Threatening to Harm Others)                     | <input type="checkbox"/> | <input type="checkbox"/> |
| Unable to Afford Prescription Medications  | <input type="checkbox"/> | <input type="checkbox"/> |
| Urgent Medical Situation (Broken Bone, Cut that Needs Stitches)                            | <input type="checkbox"/> | <input type="checkbox"/> |

14



20. If a child or adolescent you know (ages 0-18) were to experience any of the below situations, would you know how to get community help?

|  | Yes                      | No                       |
|--|--------------------------|--------------------------|
| Addiction to Alcohol, Gambling, Narcotics, etc.  | <input type="checkbox"/> | <input type="checkbox"/> |
| Emergency Medical Situation (Chest Pain, Shortness of Breath, Slurred Speech, Head Injury) | <input type="checkbox"/> | <input type="checkbox"/> |
| Housing Needs (Rent, Homeless, Eviction)   | <input type="checkbox"/> | <input type="checkbox"/> |
| Lack of Food   | <input type="checkbox"/> | <input type="checkbox"/> |
| Mental Health Crisis (Suicidal Thoughts or Threatening to Harm Others)                     | <input type="checkbox"/> | <input type="checkbox"/> |
| Unable to Afford Prescription Medications  | <input type="checkbox"/> | <input type="checkbox"/> |
| Urgent Medical Situation (Broken Bone, Cut that Needs Stitches)                            | <input type="checkbox"/> | <input type="checkbox"/> |

15



## Community Member: Barriers

21. Please check the **TOP 3** barriers that make it difficult for the **BOTH** adults **AND** children (if applicable) in your home to access healthcare services.

|   | Adults in the Community  | Children in the Community |
|---|--------------------------|---------------------------|
| Availability of services /<br>Wait list for services          | <input type="checkbox"/> | <input type="checkbox"/>  |
| Childcare   | <input type="checkbox"/> | <input type="checkbox"/>  |
| Challenges<br>accessing healthcare<br>services                | <input type="checkbox"/> | <input type="checkbox"/>  |
| Cost of care  | <input type="checkbox"/> | <input type="checkbox"/>  |
| COVID-19 limitations on<br>on-person appointments             | <input type="checkbox"/> | <input type="checkbox"/>  |
| Don't have the<br>technology to utilize<br>telehealth options | <input type="checkbox"/> | <input type="checkbox"/>  |
| Health insurance  | <input type="checkbox"/> | <input type="checkbox"/>  |
| Language barrier  | <input type="checkbox"/> | <input type="checkbox"/>  |
| Location of services  | <input type="checkbox"/> | <input type="checkbox"/>  |
| Transportation  | <input type="checkbox"/> | <input type="checkbox"/>  |
| Unable to get time off<br>from work                           | <input type="checkbox"/> | <input type="checkbox"/>  |



22. We would like to ensure that everyone in our community receives high quality care.  
Please consider whether there are personal factors that impact the care that adults or children in your family receive. Please check all that apply.

|  | Adults in the Family     | Children in the Family (if applicable) |
|--|--------------------------|--|
| Age  | <input type="checkbox"/> | <input type="checkbox"/>               |
| Race   | <input type="checkbox"/> | <input type="checkbox"/>               |
| Ethnicity  | <input type="checkbox"/> | <input type="checkbox"/>               |
| Immigration Status                                       | <input type="checkbox"/> | <input type="checkbox"/>               |
| Language   | <input type="checkbox"/> | <input type="checkbox"/>               |
| Sex  | <input type="checkbox"/> | <input type="checkbox"/>               |
| Gender   | <input type="checkbox"/> | <input type="checkbox"/>               |
| Level of Education                                       | <input type="checkbox"/> | <input type="checkbox"/>               |
| Intellectual Disabilities                                | <input type="checkbox"/> | <input type="checkbox"/>               |
| Physical Disabilities                                    | <input type="checkbox"/> | <input type="checkbox"/>               |
| Religious Beliefs  | <input type="checkbox"/> | <input type="checkbox"/>               |
| Sexual Orientation                                       | <input type="checkbox"/> | <input type="checkbox"/>               |
| Type of Health Insurance / Way I Pay for Health Services | <input type="checkbox"/> | <input type="checkbox"/>               |

17



Community Member: Health Information Sources

23. Which of the following do you consider to be a trusted source of health information?

- ☐ Church
- ☐ Friends / Family (in person or via social media such as Twitter, Facebook, etc.)
- ☐ State / Local Government (Health Department, Governor, City)
- ☐ Local Health System Website (Hospital, Free Clinics, etc.)
- ☐ My Healthcare Provider (Doctor, Pediatrician, Physician Assistant, Nurse)
- ☐ My Military or VA Healthcare Provider (Doctor, Pediatrician, Physician Assistant, Nurse)
- ☐ National Government (CDC, NIH, White House)
- ☐ National Healthcare Sources (Such as Web MD)

Other (please specify)



Community Member: Your Point of View

Please tell us a little about yourself (OPTIONAL)

24. Gender

- ☐ Male
- ☐ Female
- ☐ Non Binary
- ☐ Prefer Not to Answer

25. Race

- ☐ White
- ☐ Black
- ☐ American Indian / Alaska Native
- ☐ Asian / Native Hawaiian / Other Pacific Islander
- ☐ Some Other Race
- ☐ Two or More Races

26. Ethnicity

- ☐ Hispanic
- ☐ Not Hispanic or Latino

27. Age (years):

- ☐ 0-17
- ☐ 18-24
- ☐ 25-54
- ☐ 55+



28. Highest Level of Education Completed

- ☐ Grade K-8
- ☐ Grade 9-12
- ☐ High School Graduate
- ☐ Some College / No Degree
- ☐ Associates Degree
- ☐ Bachelor's Degree
- ☐ Graduate Degree
- ☐ No Schooling Completed

29. Insurance

- ☐ Private Insurance (Individual, Exchange Plan, Employer Sponsored)
- ☐ Medicare
- ☐ Medicaid
- ☐ Military (Tricare / VA Benefits)
- ☐ Indian Health Services
- ☐ Uninsured / Self Pay

If enrolled in more than one insurance type, please list them below:

30. Are you currently serving on active duty or as a Reservist in the U.S. Armed Forces?

- ☐ Yes
- ☐ No

31. Are you a veteran of the U.S. Armed Forces?

- ☐ Yes
- ☐ No

32. Are you a dependent of someone who serves in the U.S. Armed Forces?

- ☐ Yes
- ☐ No

20



**33. Housing**

☐ Own  
☐ Rent  
☐ Homeless  
☐ Foster  
☐ Other (please specify)

**34. Live With:**

Number of Adults in Home

Number of Children

**35. Live With: Age Range of Children**

☐ 0-4  
☐ 5-11  
☐ 12-18  
☐ 19-21  
☐ There are no children within these age ranges living in my home.

**36. Primary Language(s) Spoken in Your Home?**

|   |   |   |
|---|---|---|
| <input type="checkbox"/> English                      | <input type="checkbox"/> Gujarati               | <input type="checkbox"/> Tagalog                          |
| <input type="checkbox"/> Spanish                      | <input type="checkbox"/> Haitian/ French Creole | <input type="checkbox"/> Vietnamese                       |
| <input type="checkbox"/> American Sign Language (ASL) | <input type="checkbox"/> Hindi                  | <input type="checkbox"/> Other - African Languages        |
| <input type="checkbox"/> Arabic                       | <input type="checkbox"/> Japanese               | <input type="checkbox"/> Other - Pacific Island Languages |
| <input type="checkbox"/> Chinese                      | <input type="checkbox"/> Korean                 | <input type="checkbox"/> Other - Asian Languages          |
| <input type="checkbox"/> Farsi / Persian              | <input type="checkbox"/> Mon-Khmer, Cambodian   | <input type="checkbox"/> Other - Indic Languages          |
| <input type="checkbox"/> German                       | <input type="checkbox"/> Russian                |   |

Other (please specify)

21





37. Please indicate how satisfied you feel your community is addressing diversity, equity and inclusion (DEI).

- ☐ Very satisfied
- ☐ Satisfied
- ☐ Neither satisfied nor dissatisfied
- ☐ Dissatisfied
- ☐ Very dissatisfied

22



Community Member: COVID-19 Questions - Children and Youth

38. Did the eligible CHILDREN (ages 5 and up) in your home get the COVID-19 vaccine?

- ☐ All of the eligible children in my home are vaccinated
- ☐ Some of the eligible children in my home are vaccinated
- ☐ No, the eligible children in my home are not vaccinated
- ☐ No children live in my home

23



Community Member: COVID-19 Questions - Children and Youth

39. Do you plan to have your child(ren) get the COVID-19 vaccine in the future?

- ☐ Yes  
☐ No  
☐ Maybe

40. Please share your concerns about the COVID-19 vaccine (select all that apply):

- ☐ I do not believe in vaccines in general  
☐ Fear of needles  
☐ Worried it will be harmful or have side effects  
☐ With multiple vaccines, I do not know which is best  
☐ I am not concerned about COVID-19, so I do not need a shot  
☐ I already had COVID-19, so I do not think it is necessary  
☐ Worried about possible costs  
☐ Unclear how to get the shot / difficulty accessing  
☐ Religious Objections  
☐ Medical Condition

Other (please specify)



Community Member: COVID-19 Questions - Adults

41. Did all of the ADULTS in your home get the COVID-19 vaccine?

- ☐ All adults in my home are vaccinated
- ☐ Some adults in my home are vaccinated
- ☐ None of the adults in my home are vaccinated

25



Community Member: COVID-19 Questions - Adults

42. Do the adults who have not had the vaccine at this time plan to get it in the future?

- ☐ Yes
- ☐ No
- ☐ Maybe

43. Please share your concerns about the COVID-19 vaccine (select all that apply):

- ☐ I do not believe in vaccines in general
- ☐ Fear of needles
- ☐ Worried it will be harmful or have side effects
- ☐ With multiple vaccines, I do not know which is best
- ☐ I am not concerned about COVID-19, so I do not need a shot
- ☐ I already had COVID-19, so I do not think it is necessary
- ☐ Worried about possible costs
- ☐ Unclear how to get the shot / difficulty accessing
- ☐ Religious Objections
- ☐ Medical Condition

Other (please specify)

44. In the past 18 months, there has been economic and social unrest during the national pandemic.

My family's PHYSICAL health is    My family's EMOTIONAL health is    My family's FINANCES are

How has your family been  
affected since February  
2020?





# Appendix B

Organizations Who Provided Community Input

| Organizations                                  |  |   |
|--|--|---|
| 211 Virginia / The Planning Council            | Frans Home Care                              | Peninsula Agency on Aging, Inc.                               |
| 3e Restoration, Inc                            | Freed Veterinary Hospital                    | Peninsula Counseling Center                                   |
| Abundant Life Partners                         | Freedom Life Church                          | Peninsula Family Dentistry                                    |
| Access Partnership                             | Girl Scouts of the Colonial Coast            | Peninsula Medical Center for Women                            |
| Addiction Recovery Consulting                  | Girls on the Run Hampton Roads               | Peninsula Pastoral Counseling Center                          |
| ALPHATEC SURVEYORS LTD.                        | Grace ABA                                    | Personal Touch  |
| Alternatives, Inc.                             | Greater Aberdeen District 10                 | Phillips Energy, Inc.   |
| Alzheimer's Association Southeastern Virginia  | Greenfield Senior Living                     | Pineapple Babies Birth Services                               |
| Amedisys                                       | Grove Christian Outreach Center              | PINNACLE HAND THERAPY LLC                                     |
| American Heart Association                     | Guided Care Services                         | Pinnacle Treatment Center-American Addiction Treatment Center |
| American Legion                                | Hampton and Peninsula Health Districts       | Pivot Physical Therapy  |
| Animal Eye Care                                | Hampton City Schools                         | Poquoson City Public Schools                                  |
| Anna Seafood                                   | Hampton Community Services                   | Postpartum Support VA   |
| Anthony Martin Dentistry                       | Hampton Division of Fire & Rescue            | Prestige Home Health Care                                     |
| Apeil Showers Inc                              | Hampton Family Practice                      | Project Nana, Inc.  |
| APEX Physical Therapy & Movement Center        | Hampton General District Court               | Purity Day Spa, LLC   |
| Aspire New Life, LLC                           | Hampton Health Department - WIC Program      | R&M CHILDCARE LLC   |
| Asthma & Allergy Foundation of America         | Hampton Health District                      | Renaissance Pediatrics  |
| Avalon Center                                  | Hampton Healthy Families                     | Rhodes to Health  |
| Beachwood Center                               | Hampton High School                          | Richmond Ambulance Authority                                  |
| Behavioral Health Group                        | Hampton-Newport News Community Services      | Rising Sun Baptist Church                                     |
| Beltone Ledford Audiology & Hearing Aid Center | Hampton Public Defender                      | Rite Aid  |
| Benevolent Family Services                     | Hampton Roads Academy                        | Rivermont Schools   |
| Bon Secours Hampton Roads                      | Hampton Roads Ecumenical Lodgings &          | Riverside Health System                                       |
| Boo Williams Summer League/Boo Williams        | Hampton Roads Eye Associates                 | Rock Landing Psychological Group                              |
| Boys & Girls Clubs of the Virginia Peninsula   | Hampton roads Foot and Ankle Specialist      | Saint George Coptic Orthodox Church                           |
| Brain Injury Association of Virginia           | Hampton Roads Neurosurgery & Spine           | Salon Elite   |
| Brittany's Beauty Bar                          | Hampton Roads Pediatric Dentistry            | Self Protection Awareness SPA                                 |
| BuzzRx   | Hampton Roads Workforce Council              | Sentara Healthcare  |
| By Your Side Technology                        | Hampton Seafood Market                       | ServiceMaster Commercial Services                             |
| Cammenterprises                                | Hampton Social Services                      | Shaffer Evaluation Group                                      |
| Capital Realty Group                           | Hampton University Speech, Language, Hearing | Sheetz Inc.   |
| Carlton Building Services                      | HAMPTON VA MEDICAL CENTER                    | Smart Beginnings VA Peninsula                                 |
| Cascadia Counseling, PLLC                      | Hampton WIC Program                          | South-Eastern Family Project                                  |
| Catholic Charities of Eastern Virginia         | HELP Clinic                                  | Southeastern Virginia Health System                           |
| Celebrate Healthcare LLC                       | Hi Family Health Center                      | SpiritWorks Foundation  |
| Celli's Chocolate Chips LLC                    | Hope Unity Freedom                           | St Mark Lutheran Church                                       |
| Center For Global Diplomacy                    | Hospital Liaison Committee for Jehovah's     | St. Andrew's Episcopal Church, Newport News                   |
| CFF Properties                                 | Hotel kids inc                               | St. Luke's United Methodist Church Preschool                  |
| Checkered Flag                                 | HREA   | Stepping Stones CDC   |
| Chesapeake Care                                | HRNSS. Hampton Roads Neurosurgery and Spine  | Temple of Peace Church  |
| Chesapeake Juvenile Services                   | HROSM  | The AFYA Effect Family Healthcare Services                    |
| Children's Specialty Group                     | Human Services                               | The Children's Clinic LTD                                     |
| Child Development Resources                    | Huntington Ingalls                           | The Community Free Clinic of Newport News                     |



| Organizations                                 |  |  |
|---|--|--|
| CHKD  | Infinity Pediatric and Adolescent Medicine, PLLC | The Goddard School   |
| Christ the King Episcopal Church              | Innovage PACE                                    | The Milieu Therapeutic Services                              |
| Christopher Newport University                | Integrated Health Service                        | The Office Group, Inc.                                       |
| Churchland Psychiatric Associates             | James City County                                | The Parish Thrift Shop, Inc                                  |
| CINCH   | James City County Department of Social           | The Planning Council   |
| CIS of Hampton Roads                          | James City County Dept of Social Services        | The Up Center  |
| Citizens For A Tyranny Free Virginia          | James City County Social Services                | The Village Midwife  |
| City of Hampton Department of Social Services | James City County, Emergency Management          | The Williamsburg Drug Company                                |
| City of Newport News                          | James City Service Authority                     | Thimble Shoals Counseling & Therapy Center                   |
| City of Williamsburg                          | JCPENNEY'S, INC.                                 | Thrive Therapy, LLC  |
| Clinical Associates of Tidewater              | Jewish Family Service                            | Tidewater Youth Services Commission                          |
| Coast Guard Blue Dolphins Swim Team, Inc.     | JHP Communications LLC                           | Tower of Deliverance Fellowship Church                       |
| Coastal Homebirth. Llc                        | JLS Real Estate                                  | TPMG   |
| Colonial Behavioral Health                    | Jolly Pond Veterinary Hospital                   | Ultra Endodontics  |
| Colonial CASA                                 | Kaleidoscope Counseling & Case Management        | United and Empowered Care, Inc.                              |
| Colonial Psychaiatric Associates              | Kiln Creek Animal Care                           | United Healthcare  |
| COMFORT KEEPERS                               | King of Clubs                                    | United House of Prayer for All People                        |
| Commonwealth Catholic Charities Refugee       | L&L Marine Inc.                                  | United Negro College Fund (UNCF)                             |
| Community Corrections                         | Lackey Clinic                                    | United Way of the Virginia Peninsula                         |
| Community Housing Partners                    | Lakeside Center                                  | US Postal Service  |
| Community Knights, Inc                        | Langley Airforce Base                            | VA Consumer Direct Care Network                              |
| Community of Faith Mission                    | Legacy Hospice                                   | Veterans Affairs   |
| Consumer Health Network                       | Lejeune Family Dentistry                         | Virginia Affiliate of The American College of Nurse-Midwives |
| CSG   | Levy Dental Group                                | Virginia Cooperative Extension FCS Family Focus              |
| Culture Cafe                                  | Lewis Painting Inc.                              | Virginia Department of Health                                |
| CVS   | LifeNet Health                                   | Virginia Health Catalyst                                     |
| DARS  | Lillibridge Healthcare Services, Inc.            | Virginia Hope  |
| Department for Aging and Rehabilitative       | LINK of Hampton Roads Inc                        | Virginia Peninsula Foodbank                                  |
| Dept of Human Services                        | Literacy for Life                                | Virginia Support Services                                    |
| Dept for Aging & Rehab Services               | Lockwood Broadcast Group                         | Visiting Angels  |
| Dignity for the Aged                          | Maria Bonita                                     | Waldron Eyecare  |
| Dilon Technologies, Inc                       | MD Express Urgent Care                           | Walnut Hills Baptist Church Learning Center                  |
| Division of Child Support Enforcement         | Meadow Green Building                            | Walsingham Academy   |
| Dominion Psychological Associates, LLC        | Merrimac Juvenile Detention Center               | WEPI   |
| Dominion Services for All People              | nAble Contracting                                | Wexford Hills HOA  |
| Dr. David L. Miller D.D.S.                    | Neill Family and Cosmetic Dental Care            | Weymouth Funeral Home  |
| DT Electric, LLC                              | New Town Counseling Center                       | William & Mary   |
| Eastern Virginia Medical School & Medical     | Newport News Fire Department                     | William G Via Sr Painting                                    |
| ECPI School of Nursing                        | Newport News Juvenile Detention Center           | Williamsburg Area Faith In Action                            |
| Edmarc, Inc.                                  | Newport News Office of Child Support             | Williamsburg Area Transit Authority                          |
| Elevate Properties                            | Newport News Public Schools                      | Williamsburg Baptist Church                                  |
| enCircle                                      | Newport News Redevelopment and Housing           | Williamsburg Community Chapel                                |
| EVa Homebirth, LLC                            | New Horizons Regional Education Centers          | Williamsburg Drug Co   |
| Faith Church of God                           | Old Dominion University                          | Williamsburg EDA   |





| Organizations  |                                      |  |
|--|--------------------------------------|--|
| Family Restoration Services                                    | Olde Town Medical Center             | Williamsburg Health Foundation   |
| Fashing, Fashing and McCoy                                     | Olde Towne Medical and Dental Center | Williamsburg Human Services  |
| First United Methodist Church Fox Hill                         | Olde Towne Pharmacy, Inc             | Williamsburg Montessori School   |
| Five Star Residential Living                                   | On the Move Massage                  | Williamsburg Regional Library  |
| Fleet and Family Support Centers                               | OPTIMA                               | Williamsburg Winery  |
| Fly Family Therapy, Inc  | OutKind Counseling                   | Williamsburg-James City County Public Schools  |
| Food Lion  | Oyster Point Oral & Facial Surgery   | York County Board of Supervisors   |
| Forrest Sewer Pump Service, Inc.                               | Pariser Dermatology                  | York County Children & Family Services Head  |
| Fort Monroe Authority  | Parkview Baptist Church              | York County Food Closet  |
| Foundation for Rehabilitation Equipment & Endowment (F.R.E.E.) | Parlor Salon                         | York County School Division  |
| Foundation Tattoo  | Partners in Women's Mental Health    | York/Williamsburg/Poquoson/James City Professional Fire Fighters, Paramedics and 911 |
| Four Squares LLC   | Pediatric Associates of Williamsburg | York-Poquoson Social Services  |
| Fox Hill Neighborhood Center                                   | Pediatric Center PC                  | Yorktown Animal Hospital   |
|  | Pediatrics at Oyster Point           |  |



# Appendix C

Summary of Community Dialogues

**BSHR CHNA Community Dialogue**

**Date:** Wednesday, February 16, 2022

**Time:** 10:30 AM – 11:30 AM

**Attendance:** 20

**Group/Meeting Location:** Family Focus Hispanic Circle of Parents  
St. George Church, Newport News

**Desired Outcomes:**

- Explain the CHNA process to attendees.
- Solicit qualitative feedback from attendees to shape CHNA strategy.

**Questions:**

- What are your health concerns?
- What are concerns in your community?
- What are some community strengths?
- How can we help?

**Themes/Feedback:**

- Health Access
  - Many participants do not have insurance and do not know how to access free healthcare resources
  - Participants stated they would not go visit a healthcare provider due to costs
  - Lack of specialists and optometrists to provide care to those who lack insurance.
  - Participants desire to get Flu and COVID-19 vaccines and tests but are worried about the costs.
  - Participants expressed a need for a resource directory in Spanish.
  - Desire for more health education programming, like diabetes education.
  - More needs to be done around mental health
  - Some participants expressed that they've known children that were cutting themselves due to mental health anguish.
- Transportation
  - Lack of reliable public transportation throughout the Peninsula
  - One participant's husband spends ~3 hours on bus to go to and from work at the shipyard
- Violence in the Community
  - Participants worry about the safety of their families.
  - There was a knifing in one participant's community
  - Police visited another participant after midnight and the participant was concerned about opening the door due to the time and unexpected nature of visit.
  - School bullying was especially worrying for the participants as many of their children experienced instances of bullying.



- Community Resources
  - Desire for more food pantries that serve the Hispanic population
  - Desire for more parent education about bullying
  - Participants want more health programs
  - Desire for more funding resources for emergencies
    - The group would like to crowdsource money and labor to support one another
  - Desire for affordable pathways for legal services
  - Unsure if language assistance for first responders
  - Development of small business opportunities for program participants.
  - Hispanic Resource Center is a great existing resource
  - There are free women's health resources available in Hampton
  - Desire to learn more about Care-A-Van



## **BSHR CHNA Community Dialogue**

**Date:** Friday, March 18, 2022

**Time:** 11:00 AM – 12:00 PM

**Attendance:** 20

**Group/Meeting Location:** The StoreHouse Food Pantry  
East Ocean View, Norfolk

### **Desired Outcomes:**

- Explain the CHNA process to attendees.
- Solicit qualitative feedback from attendees to shape CHNA strategy.

### **Questions:**

- What are your health concerns?
- What are concerns in your community?
- What are some community strengths?
- How can we help?

### **Themes/Feedback:**

- Ongoing programming was important to keeping community engaged.
  - The youth need activities to stay off the streets, especially during the summer.
  - Opportunities for sporting competitions for adults and youth to improve physical activity.
- Transportation for services and medical appointments was a barrier for many residents.
  - Lee's Friends is a volunteer driving service to get people to appointments.
  - Donations to purchase bus passes for those in needs, but the bus stops are far away for some.
  - Linking into Senior Services for transportation
- Mental Health
  - Still stigmatized, but needs to be discussed to make progress
  - Counseling and medications are unaffordable
- Job training and GED classes in the community are desired.
- Health Access
  - The Care-A-Van was widely praised by the group as a place-based, compassionate health resource that provided treatment, access to free or reduced cost medications, and other health services, like Every Woman's Life.
  - Participants need assistance in accessing oxygen and other medical supplies.
  - The group expressed remorse about the closure of DePaul Medical Center.
  - Participants appreciated East Beach Medical Group and OV Medical and Dental FQHC being in the community.
- Better coordination and marketing of community-based resources was desired
  - All information regarding existing programming should be passed to civic league and StoreHouse for dissemination.



**BSHR CHNA Community Dialogue**

**Date:** Thursday, March 24, 2022

**Time:** 11:00 AM – 1:00 PM

**Attendance:** 25

**Group/Meeting Location:**

Women's Wellness Series Cancer Prevention Lunch & Learn

First Baptist Church of Newport News

**Desired Outcomes:**

- Explain the CHNA process to attendees.
- Solicit qualitative feedback from attendees to shape CHNA strategy.

**Questions:**

- What are your health concerns?
- What are concerns in your community?
- What are some community strengths?
- How can we help?

**Themes/Feedback:**

- The desire for greater access to health education was expressed by many participants.
- Healthy eating/access to healthy foods was not necessarily difficult, but affordability and portion control was for many in the group.
- Physical activity opportunities for an aging population were expressed as a need among meeting participants.
- Many in this group stated they had good relationships with their medical providers.
- Youth activities were uplifted as a method to improve community safety.
- Bringing programs into communities was stated to be more impactful than arranging transportation for participants.
- The group appreciated the role of the church in disseminating information and programming to the community.



**BSHR CHNA Community Dialogue**

**Date:** Tuesday, March 29, 2022

**Time:** 6:00 PM – 7:00 PM

**Attendance:** 12

**Group/Meeting Location:** Zoom-Based Community Dialogue  
New Hope Baptist Church, Franklin

**Desired Outcomes:**

- Explain the CHNA process to attendees.
- Solicit qualitative feedback from attendees to shape CHNA strategy.

**Questions:**

- What are your health concerns?
- What are concerns in your community?
- What are some community strengths?
- How can we help?

**Themes/Feedback:**

- There is a lack of health care resources in the community.
- Health disparities are present, including incidences of diabetes and cancer.
- There are also disparities in income levels and lack of overall resources.
- Due to lack of diversity among healthcare providers in this community, participants do not feel comfortable going to hospital to receive care or to access preventive services.
- The community lacks doctors who practice pediatrics, geriatrics, and oncology.
- Information about community resources and services is not available.
- Communication, collaboration, family units, and the social fabric of this community are strong.
- Coordination of resources and alleviating the concerns addressed above are opportunity areas for Bon Secours.



**BSHR CHNA Community Dialogue**

**Date:** Thursday, April 7, 2022

**Time:** 11:00 AM – 1:00 PM

**Attendance:** 12

**Group/Meeting Location:**

Women's Wellness Series Cancer Prevention Lunch & Learn  
Community Health Hub, Portsmouth

**Desired Outcomes:**

- Explain the CHNA process to attendees.
- Solicit qualitative feedback from attendees to shape CHNA strategy.

**Questions:**

- What are your health concerns?
- What are concerns in your community?
- What are some community strengths?
- How can we help?

**Themes/Feedback:**

- Health Concerns
  - Mental Health, Diabetes, Arthritis, High BP, Cancer prevention, Thyroid, Obesity, Asthma, Kidney failure
  - Lack of exercise opportunities due to safety concerns
  - Lack of communication of events going on in the city
    - Ex. National Walking Day was not well-publicized
    - Info gets to Churchland, but not Cradock
- Strengths
  - Support from churches
  - Many small businesses
  - Diversity
  - Easy to access other cities
  - Military
  - Shipyard
  - YMCA
  - Child food programs
- Needs
  - Provide exercise classes
  - 5K
  - Transportation
  - Diabetes prevention programs
  - Senior adult checks (like Sheriff dept does)
  - Get program information into schools





**BSHR CHNA Community Dialogue**

**Date:** Saturday, April 16, 2022

**Time:** 10:00 AM – 12:00 PM

**Attendance:** 4

**Group/Meeting Location:**

Monthly Walk with a Doc Engagement Program

Paradise Creek Nature Park, Portsmouth

**Desired Outcomes:**

- Explain the CHNA process to attendees.
- Solicit qualitative feedback from attendees to shape CHNA strategy.

**Questions:**

- What are your health concerns?
- What are concerns in your community?
- What are some community strengths?
- How can we help?

**Themes/Feedback:**

- More needs to be done to address violence in the community, especially gun violence.
- Diabetes is a major concern for participants
- More youth programming needs to be offered to provide youth opportunities to stay off the streets
- Workforce development opportunities, like vocational schools, need to be reemphasized as an alternative to college
- Greater homeless support is needed in the community
- Access to healthy foods is a barrier
- Transportation is a barrier in this community, which makes it difficult to access healthy foods and physical activity opportunities.
- More health education programs should be conducted
- There is a desire for more community gardens, like in Ohio and New York communities
- Silver Sneakers provides many wellness opportunities and incentives
- Civic Leagues, among other civic orgs, should be utilized to get the word out about community programming.



## **BSHR CHNA Community Dialogue**

**Date:** Monday, April 18<sup>th</sup>, 2022

**Time:** 12:00 PM – 1:00 PM

**Attendance:** 11

### **Group/Meeting Location:**

Virginia Cooperative Extension FSC Volunteer Training  
Bon Secours Community Health Hub, Portsmouth

### **Desired Outcomes:**

- Explain the CHNA process to attendees.
- Solicit qualitative feedback from attendees to shape CHNA strategy.

### **Questions:**

- What are your health concerns?
- What are concerns in your community?
- What are some community strengths?
- How can we help?

### **Themes/Feedback:**

- Portsmouth lacks resources, so residents must access resources and services from outside the city. Portsmouth does offer many senior activities.
- Eating healthy is difficult due to the number of fast-food options in Portsmouth
- Increasing awareness of resources to the community and doing so before activities take place.
- Access to healthcare is a challenge
- There are limited walking areas and other areas for recreation, lack of paved walking and biking trails (Sports Complex specifically)
- Portsmouth residents access walking areas outside of Portsmouth
- There is a need for more youth and teen activities
- Lack of social spaces
- Community Organizations do offer useful services, including Senior Station and Portsmouth YMCA
- Although crime is prevalent in Portsmouth, some participants expressed that it has not affected their neighborhoods/communities.
- Homelessness is a major issue throughout the city.
- Litter is a major concern among participants. Various areas around the city have become dumping grounds, so city doesn't look clean.
- Several areas around the city either lack street lights or they are nonfunctional, especially around Victory Crossing
- Participants discussed how to "restart" as we move forward through the COVID-19 pandemic
- There were conflicting views on the potential impact the new casino will have on the community. Some saw the economic impact as beneficial while others worried about gambling addiction and crime.
- There is a lot of love of people and city, despite hurt and pain that has taken place in the city.
- Despite lack of awareness, there are good programs taking place in Portsmouth and great collaboration between nonprofits in the area.



# Appendix D

CHNA Collaborative Representatives

| <b>Representative</b>   | <b>Organization</b>                         |
|-------------------------|---|
| <b>Brett Sierra</b>     | Bon Secours Hampton Roads                   |
| <b>Sandra Fabian</b>    | Children's Hospital of the King's Daughters |
| <b>Debbie Campbell</b>  | Riverside Health System                     |
| <b>Carrie Schmidt</b>   | Riverside Health System                     |
| <b>Sandra McMasters</b> | Sentara Healthcare                          |
| <b>Megan Dewitt</b>     | Virginia Department of Health               |
| <b>Taylor La Dieu</b>   | Virginia Department of Health               |



# Board Approval

The Bon Secours Hampton Roads 2022 Community Health Needs Assessment was approved by the Bon Secours Hampton Roads Board of Directors on September 27, 2022.

Board Signature: \_\_\_\_\_

Date: 9/27/22\_\_\_\_\_

For further information or to obtain a hard copy of this Community Health Needs Assessment (CHNA) please contact: Phyllita Bolden (phyllita\_bolden@bshsi.org)

Bon Secours CHNA Website: <https://www.bonsecours.com/about-us/community-commitment/community-health-needs-assessment>

